



# **Zoning Case #0917-05**

## **AN Corpus Christi Chevrolet, LP**

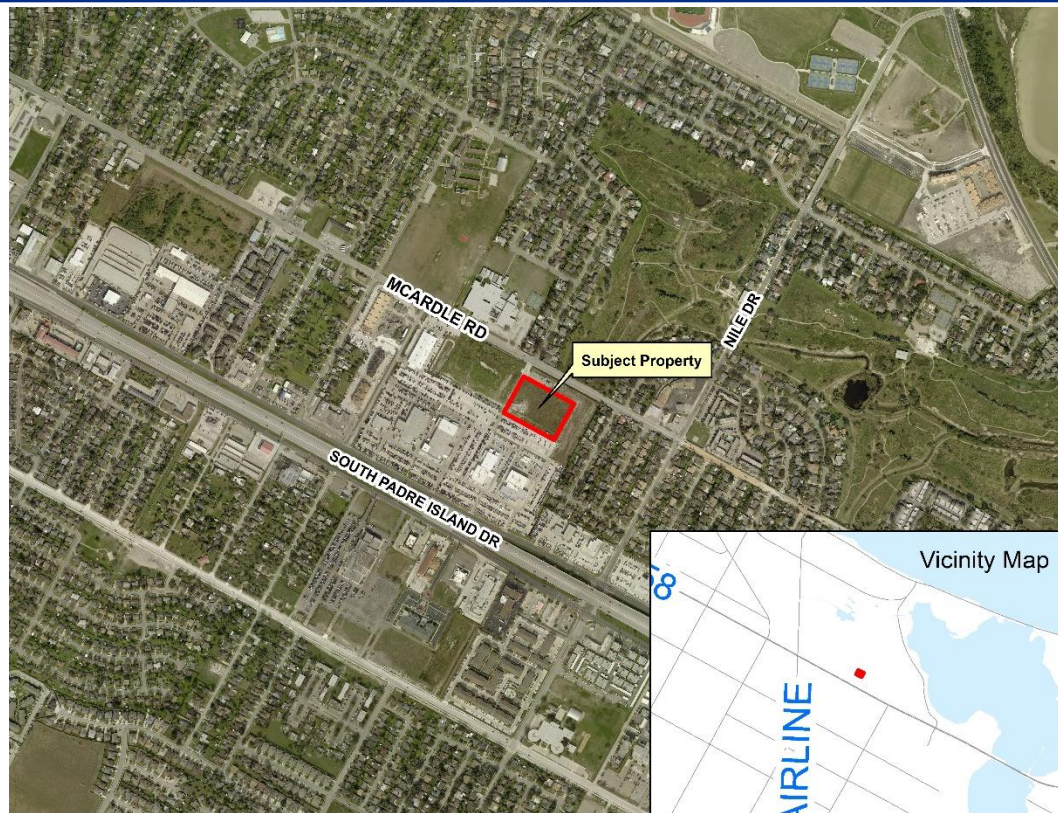
**From:** “CG-1” General Commercial District

**To:** “IL” Light Industrial District

City Council Presentation  
November 7, 2017



# Aerial Overview





# Subject Property at 6686 South Padre Island Drive

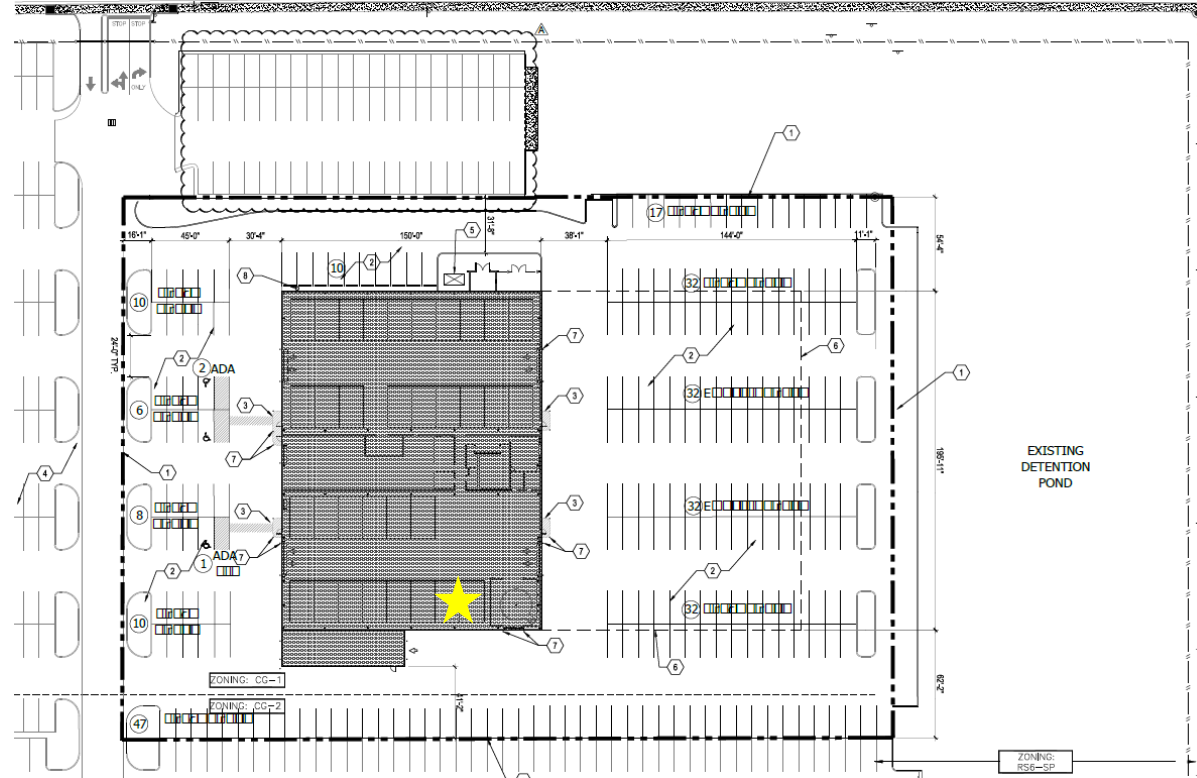






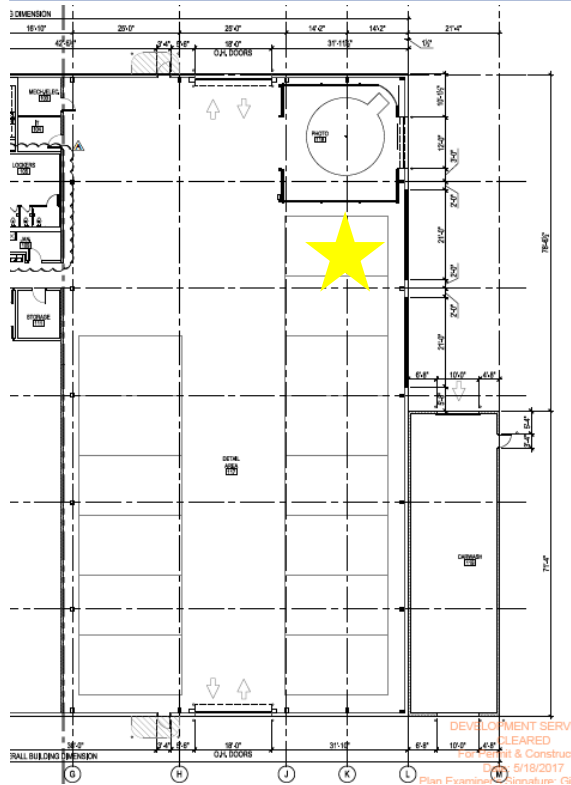


# Site Plan





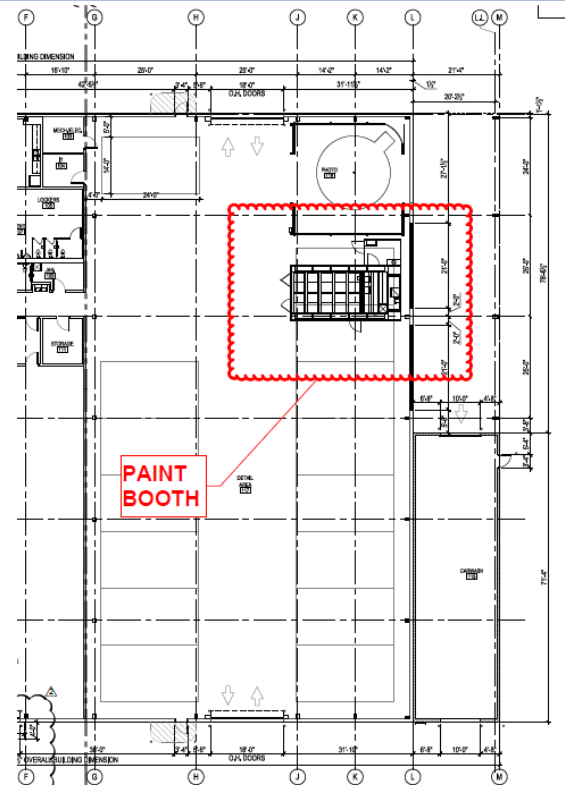
# Building Plan Comparison



Previously  
Approved



Proposed





# Staff Recommendation

---

**Denial of the  
“IL” Light Industrial District  
in lieu thereof**

**Approval of the  
“CG-1” General Commercial District  
with a Special Permit (SP).**

---