



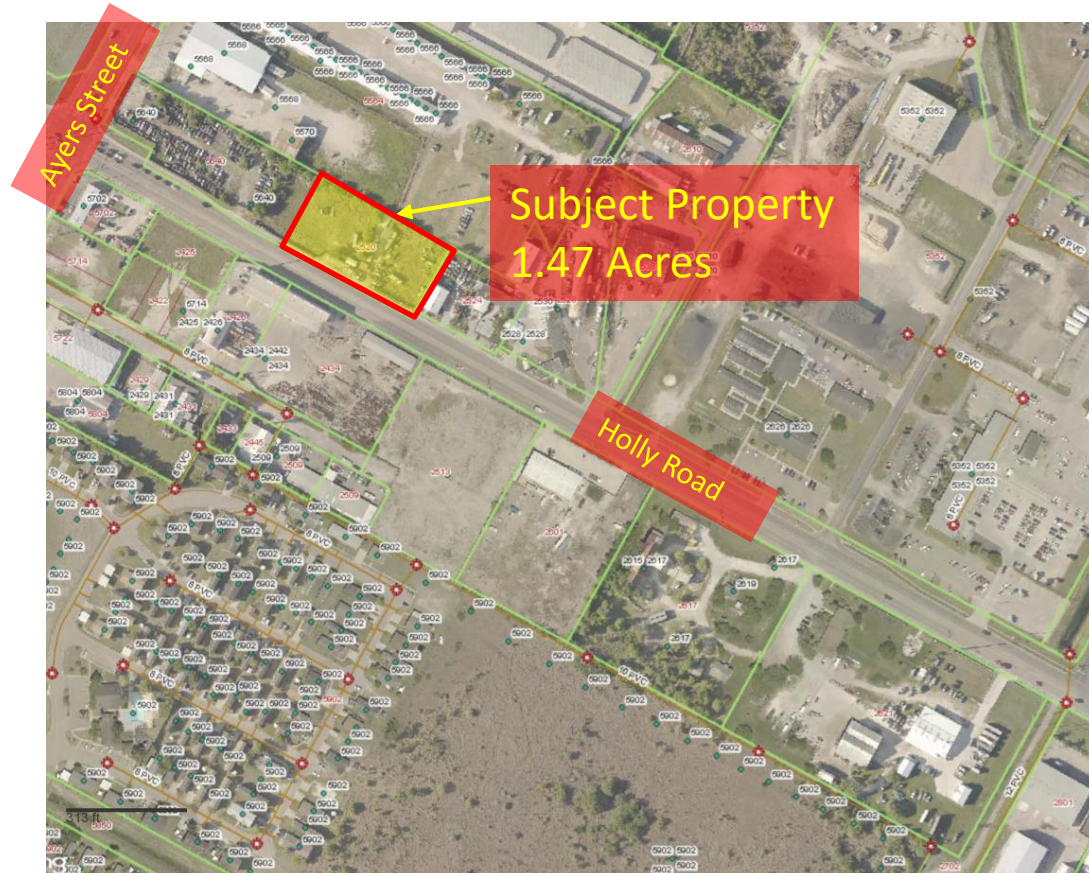
**Wastewater lot or acreage fee exemption
for
Holly Industrial Subdivision, Lot 1B**

City Council Meeting
December 12, 2017



Aerial Overview

Holly Industrial Subdivision, Lot 1B





Nearest Waste Water Manhole

Holly Industrial Subdivision, Lot 1B



Manhole
Depth 14.4'

Required WW
Improvements
Offsite-1,700 lf

Approx. Cost-
\$ 171,235.00
of which
\$ 10,117.24
may be
reimbursable



Staff Recommendation

- **Approve wastewater lot or acreage fee exemption request.**