



Street Preventative Maintenance Program (SPMP) Update & 2018 Work Plan



Council Presentation
December 12, 2017



Street Improvement Plan (SIP)

Street Preventative Maintenance Program (SPMP)





Citywide Street Maintenance



PREVENTATIVE MAINTENANCE		
SPMP		Street Operations
Overlays	Seal Coats	Seal Coats
Streets w/ PCI ~ 56	Streets w/ PCI ~ 71	Streets w/ PCI ~ 71
75% of Funding	25% of Funding	Operating Budget
ADA Improvements	Minimal Curb & Gutter Imp.	Minimal Curb & Gutter Imp.
Performed Year round	Subject to weather conditions	Subject to weather conditions



2014 (Year 1) SPMP



	Overlays	Seal Coats	Street Operations	Total
Streets Maintained	58	84	64	206
SYs	289,903	430,775	350,028	1,070,706
Linear Miles	17	26	21	64
% Arterial	39%	31%	27%	
% Collector	12%	22%	20%	
% Residential/Local	49%	47%	53%	
Status	Completed Feb. 2015	Completed Oct. 2015	Completed Sep. 2014	



2015 (Year 2) SPMP



	Overlays	Seal Coats	Street Operations	Total
Streets Maintained	45	53	52	150
SYs	199,949	216,280	274,331	690,560
Linear Miles	14	15	19	49
% Arterial	20%	36%	50%	
% Collector	24%	17%	8%	
% Residential/Local	56%	47%	42%	
Status	Completed Jul. 2016	Completed Sep. 2017	Completed Oct. 2015	



2016 (Year 3) SPMP



	Overlays	Seal Coats*	Street Operations	Total
Streets Maintained	62	96	85	243
SYs	303,170	332,007	353,045	988,221
Linear Miles	22	24	25	70
% Arterial	31%	5%	13%	
% Collector	18%	25%	30%	
% Residential/Local	51%	70%	56%	
Status	Complete Jan. 2018	Completed Sep. 2017	Completed Nov. 2016	

*Executed concurrently with 2015 Work Plan



2017 (Year 4) SPMP



	Overlays	Seal Coats	Street Operations	Total
Streets Maintained	37	23	69	129
SYs	238,643	241,452	288,262	768,357
Linear Miles	17	17	20	55
% Arterial	30%	48%	0%	
% Collector	21%	21%	38%	
% Residential/Local	49%	31%	62%	
Status	In progress	In progress	Completed Sep. 2017	



4-Year Summary



		2014 (Year 1)	2015 (Year 2)	2016 (Year 3)	2017 (Year 4)	4-Year Total
Overlay (Contractor)	# Streets	58	45	62	37	202
	Square Yards	289,903	199,949	303,170	238,643	1,031,665
	Miles	17	14	22	17	70
Seal (Contractor)	# Streets	84	53	96	23	256
	Square Yards	430,775	216,280	332,007	241,452	1,220,514
	Miles	26	15	24	17	82
Seal (City)	# Streets	64	52	85	69	270
	Square Yards	350,028	274,331	353,045	288,262	1,265,666
	Miles	21	19	25	20	86
Total	# Streets	206	150	243	129	728
	Square Yards	1,070,706	690,560	988,222	768,357	3,517,845
	Miles	64	49	70	55	238

PERCENT OF STREET NETWORK MAINTAINED (BY CLASS)				
	Arterials	Collectors	Residential	Total Network
Over 4 Years:	23%	19%	15%	17%



2018 (Year 5) SPMP Work Plan



SPMP Street Selection Criteria

(Presented 11/19/2013)



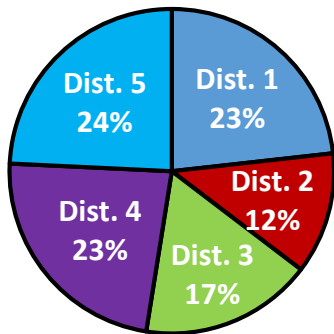
1. Work based on **Pavement Condition Index (PCI)** scores:
 - ✓ Approximately 56 for Overlays and 71 for Seal Coat
 - ✓ Work the ones closest to 56 and 71 first
 2. **Distribute by District** based on Capital Assets needing Maintenance (% of Network)
 3. **Distribute by Street Classification** (Residential, Collectors & Arterials) based on Capital Assets (% of Network)
 4. **Coordinate work** for Residential by Neighborhood and initial subdivision construction dates
 5. **Distribute work** by percentage of Overlay and Seal Coats
 6. **Prioritize by traffic loads** causing potential premature failure of roadway
-



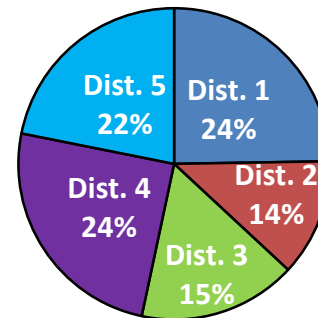
2018 (Year 5) Work Plan Target



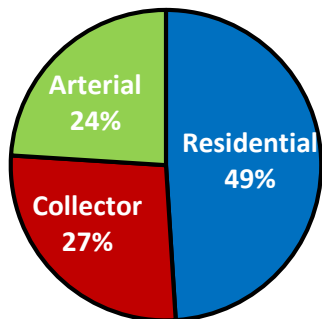
Need by District



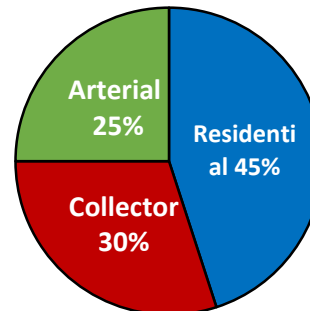
Work Plan by District



Need by Road Classification



Work Plan by Road Class





2018 (Year 5) SPMP Work Plan



	Overlays	Seal Coats	Street Operations	Total
Streets Maintained	52	42	73	167
SYs	252,039	232,621	294,546	779,205
Linear Miles	15	11	16	42
% Arterial	37%	38%	6%	
% Collector	14%	23%	48%	
% Residential/Local	50%	39%	46%	



5-Year Summary



		2014 (Year 1)	2015 (Year 2)	2016 (Year 3)	2017 (Year 4)	2018 (Year 5)	5-Year Total
Overlay (Contractor)	# Streets	58	45	62	37	52	254
	Square Yards	289,903	199,949	303,170	238,643	252,039	1,283,704
	Miles	17	14	22	17	15	85
Seal (Contractor)	# Streets	84	53	96	23	42	298
	Square Yards	430,775	216,280	332,007	241,452	232,621	1,453,135
	Miles	26	15	24	17	11	93
Seal (City)	# Streets	64	52	85	69	73	343
	Square Yards	350,028	274,331	353,045	288,262	294,546	1,560,212
	Miles	21	19	25	20	16	102
Total	# Streets	206	150	243	129	167	895
	Square Yards	1,070,706	690,560	988,222	768,357	779,206	4,297,051
	Miles	64	49	70	55	42	280

PERCENT OF STREET NETWORK MAINTAINED (BY CLASS)				
	Arterials	Collectors	Residential	Total Network
Over 5 Years:	27%	25%	18%	21%



Next Steps



- Approve 2018 Work Plan (Resolution – This Item)
- Approve AE Contract Amendment (Separate Item)
 - ✓ For Delivery Order Development

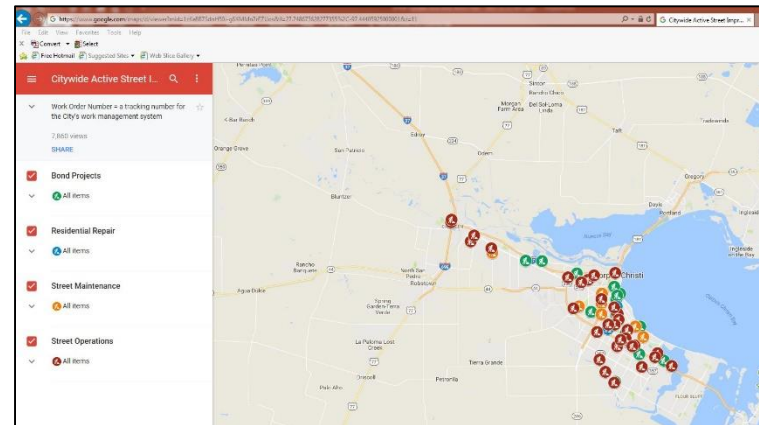
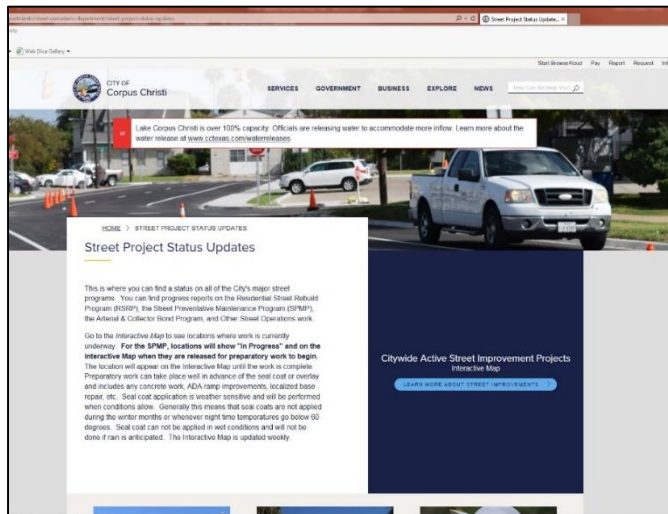


SPMP Program Status



- Website for Program status reports:

<http://www.cctexas.com/departments/street-operations-department/street-project-status-updates>





Questions?



Extending the life of our streets.