

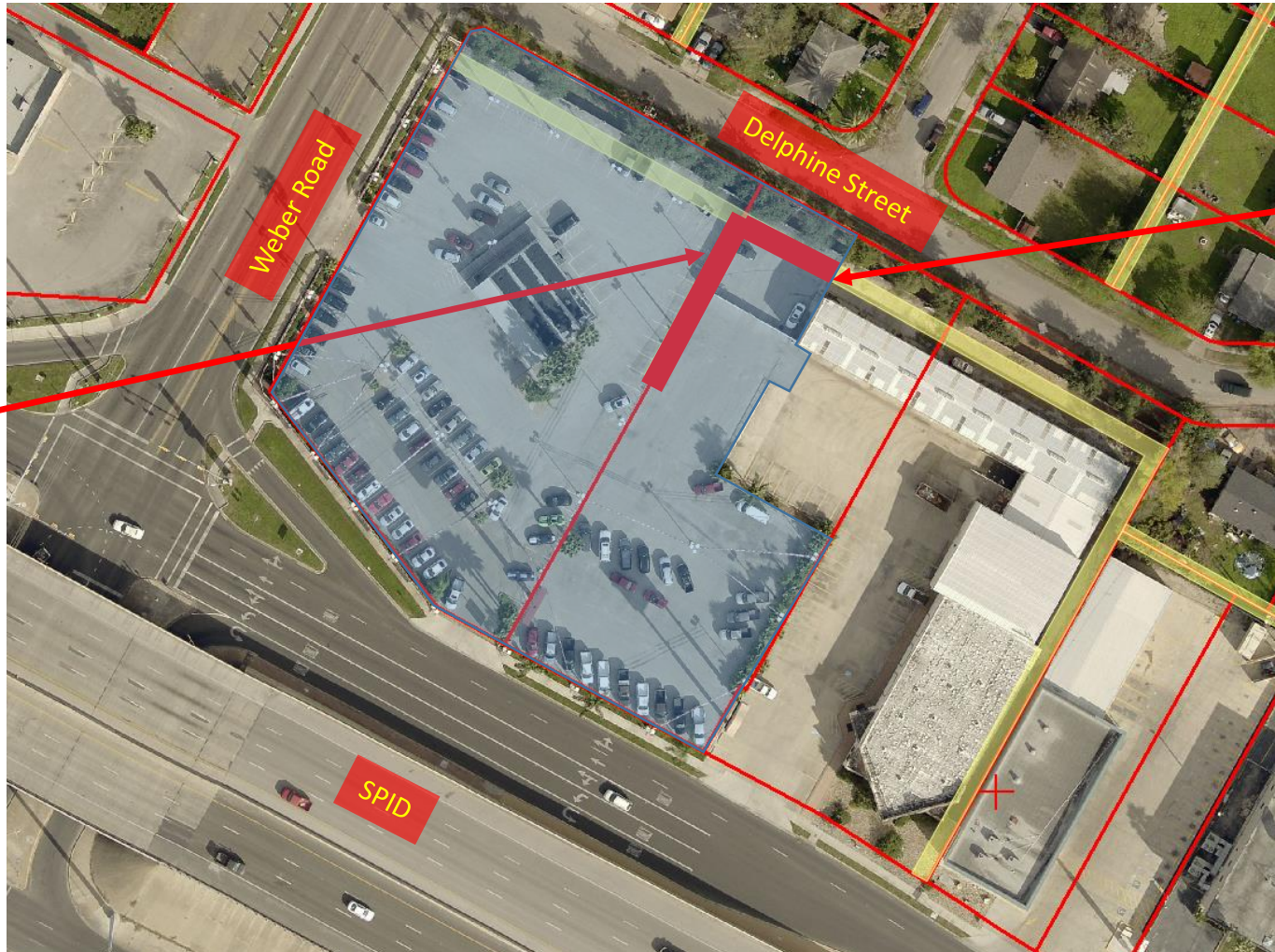


**Easement Closure  
for  
Geo J. Merriman Subdivision, Lots 1-A & 4-A**

**City Council Presentation  
January 30, 2018**



# Aerial Overview



Proposed 10' wide  
x 120' long utility  
easement closure

Proposed 10' wide  
x 74.32' long utility  
easement closure







# Vicinity Map

Proposed 10' wide utility easement closure





# Staff Recommendations

---

Staff recommends:

- Approval of the proposed Easement Closure.
-