



Zoning Case #0118-03

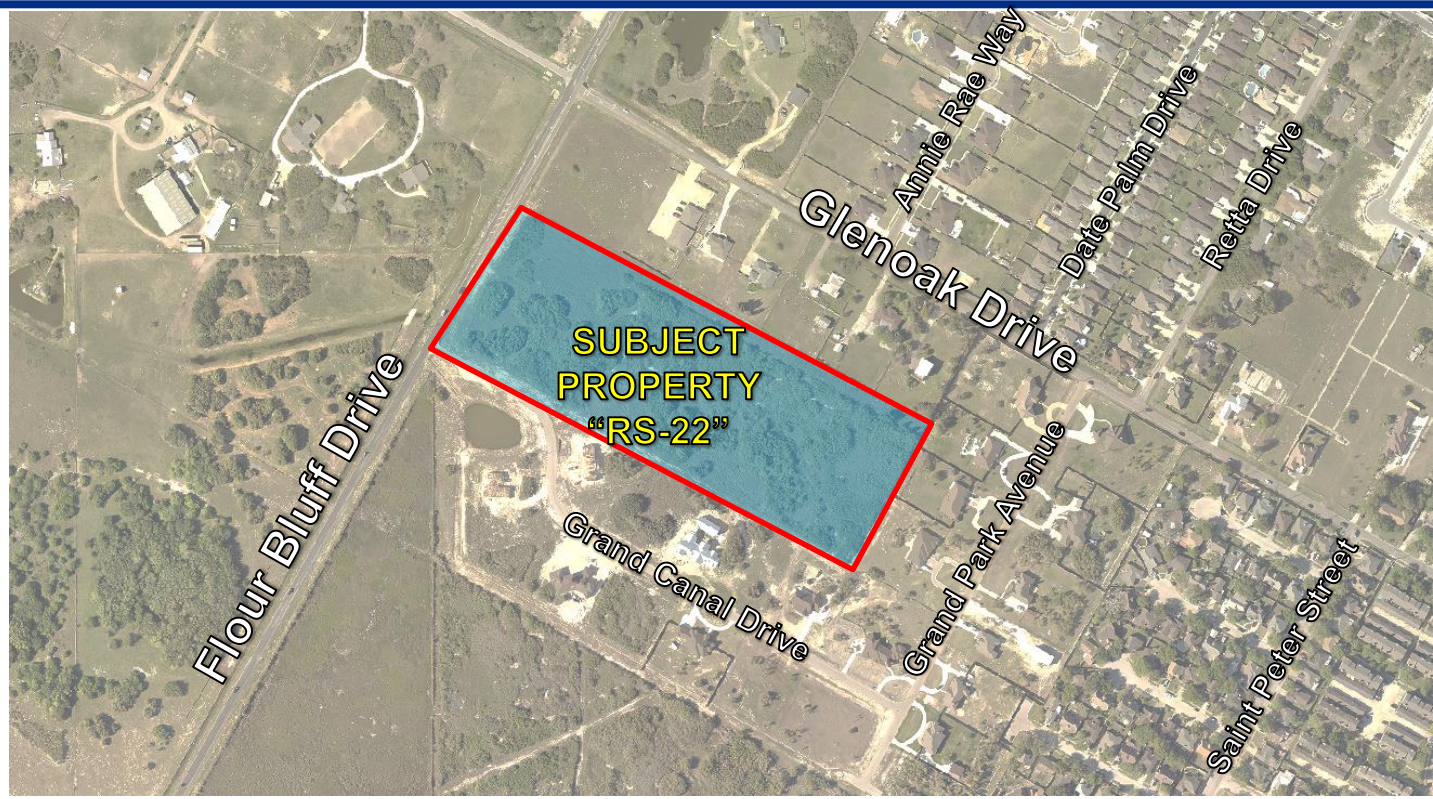
Lowm, Inc.

**Rezoning for a Property at
2722 Flour Bluff Drive**

City Council Presentation
March 20, 2018



Aerial Overview

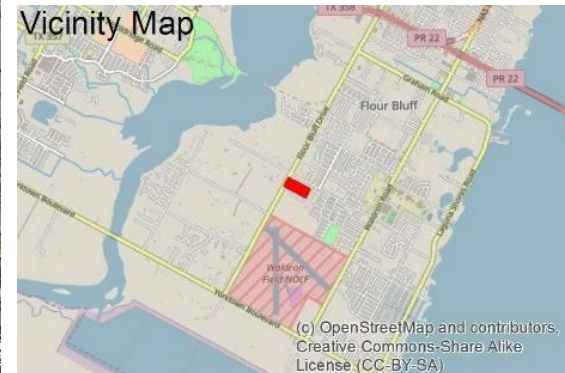




Subject Property at 2722 Flour Bluff Drive

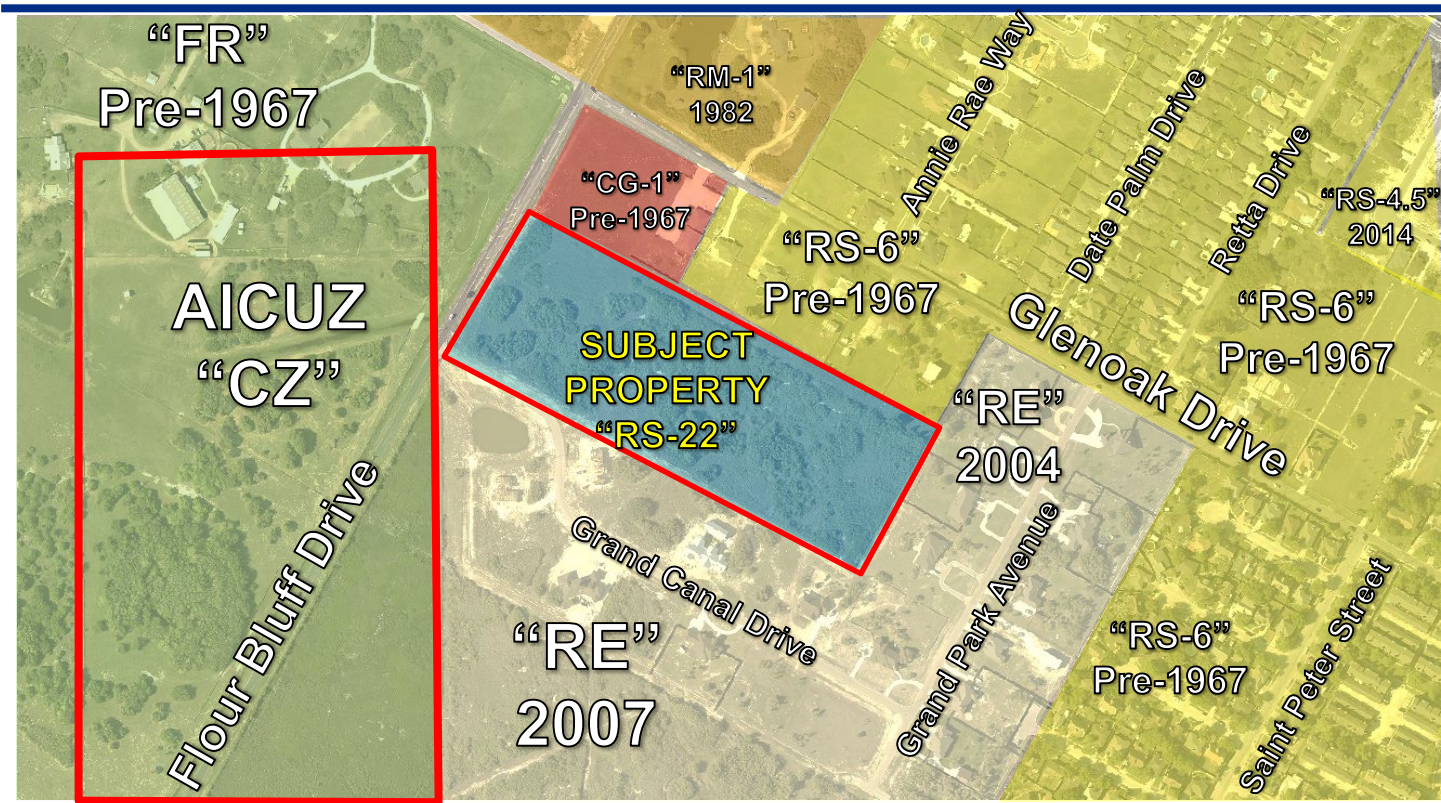


Vicinity Map





Zoning Pattern





Planning Commission and Staff Recommendation

Approval of the change of zoning from the “CG-1” General Commercial District and the “RS-6” Single-Family 6 District to the “RS-22” Single-Family 22 District.