

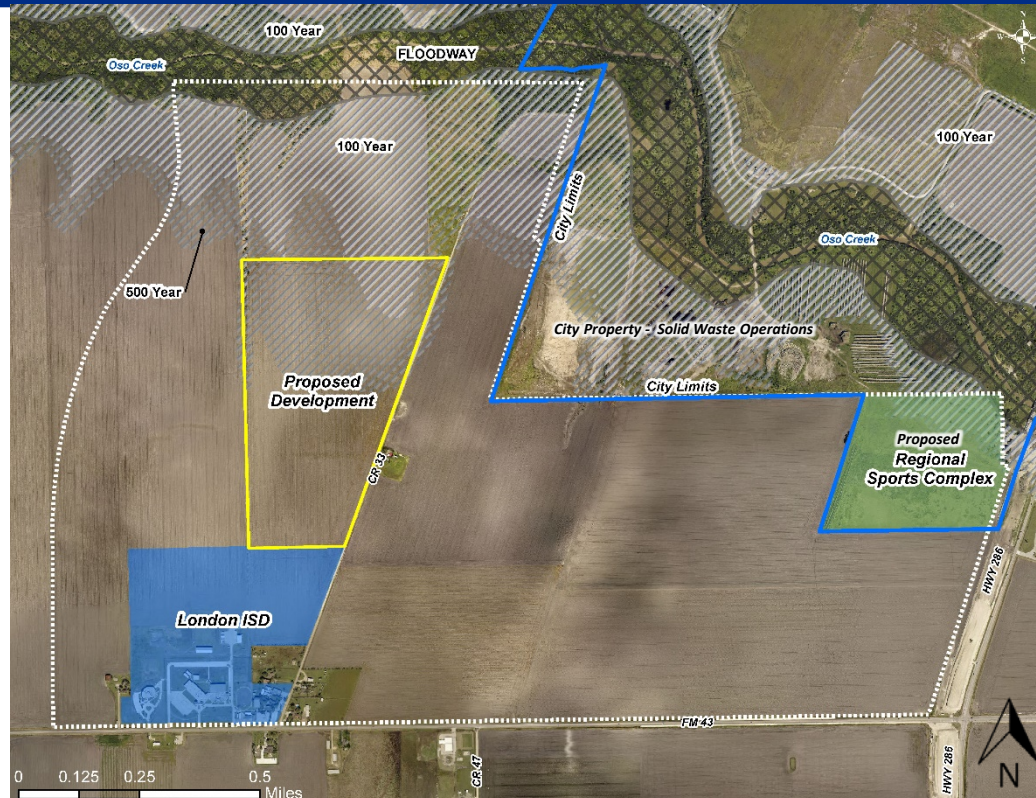
Amendments to the Wastewater Master Plan For the London Area



City Council Presentation
April 24, 2018

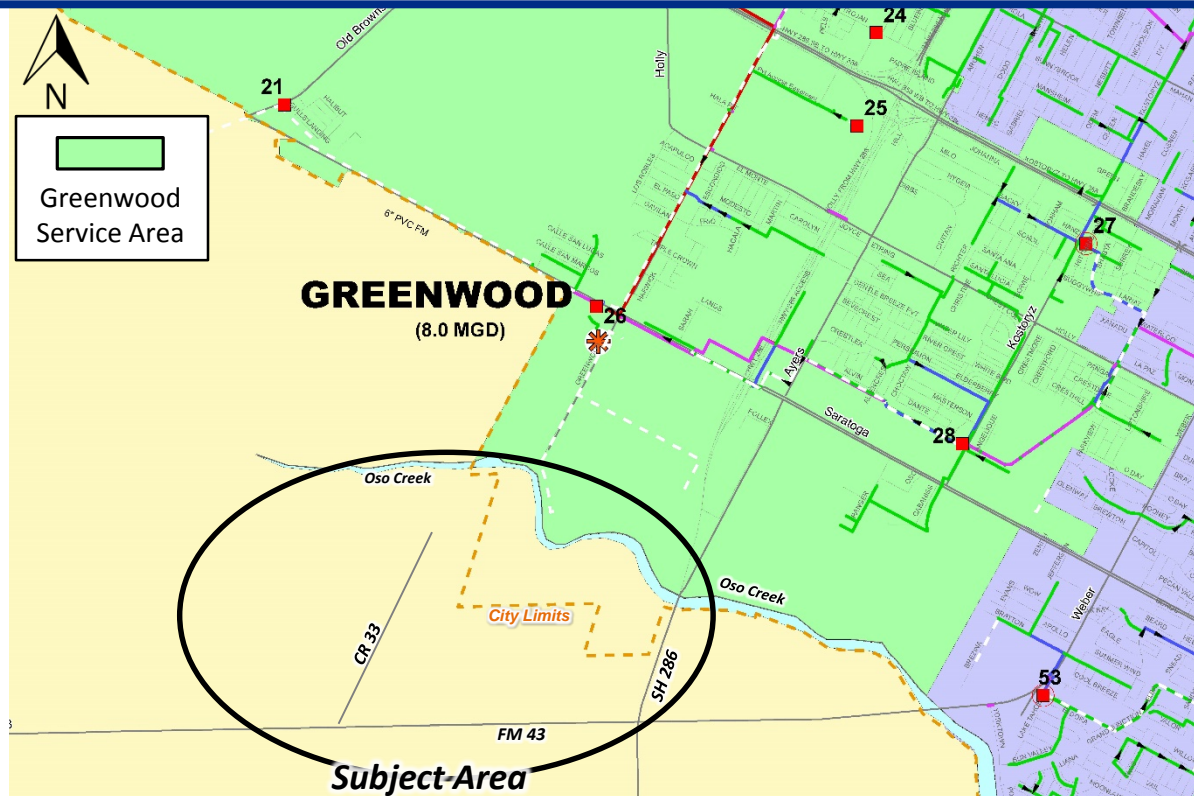


Subject Area



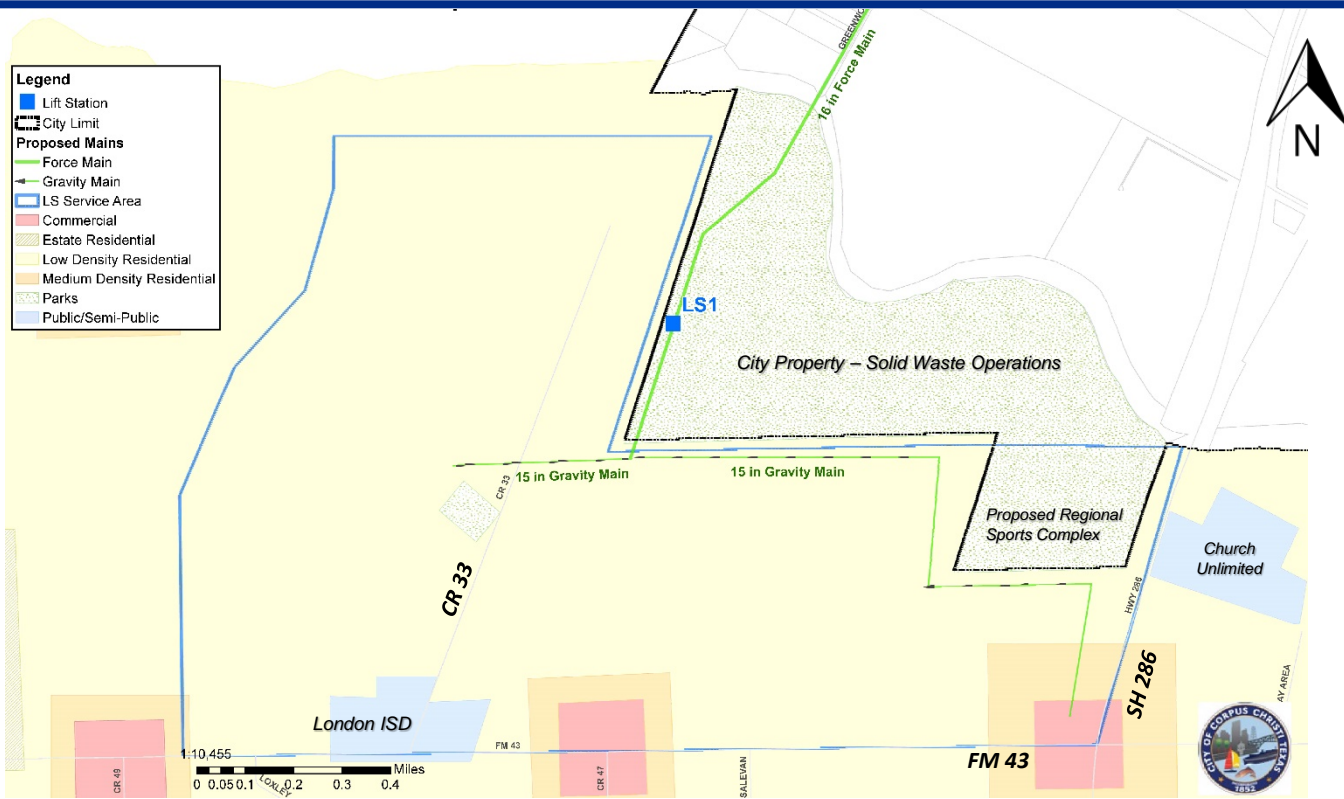


Greenwood Wastewater Service Area





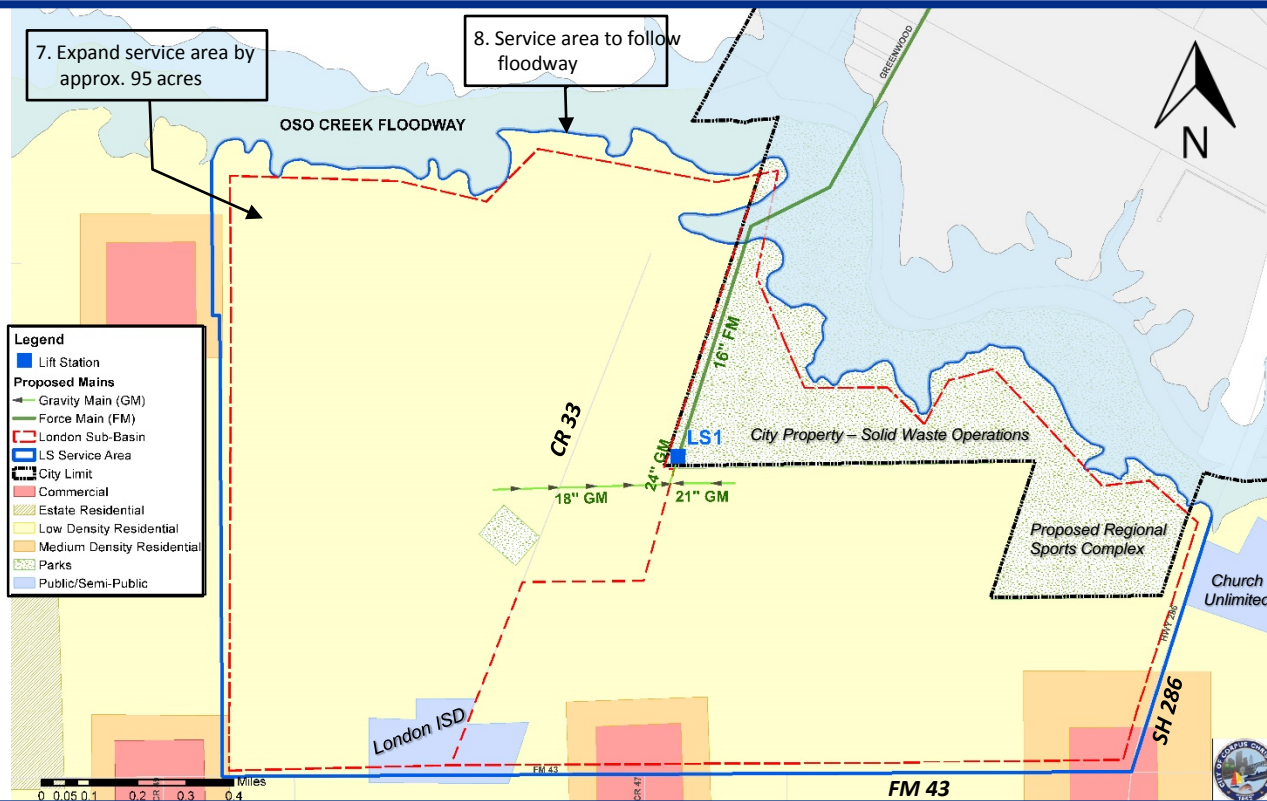
Existing Adopted Master Plan







Alternative / Staff Recommendation





Staff Recommendation

1. Correct service area boundary to include City Solid Waste property south of the Oso Creek.
 2. Relocate the lift station approximately 1/4 mile south.
 3. Increase the north-south gravity line that ties into lift station from 15" to 24" diameter.
 4. Increase west gravity line from 15" to 18" diameter.
 5. Increase east gravity line from 15" to 21" diameter and reduce its length to approximately 100'.
 6. Identify sub-basin boundaries within the service area.
 7. Expand the service area by 95 acres in the northwest area.
 8. Correct the service area boundary to follow the Oso Creek floodway.
-