

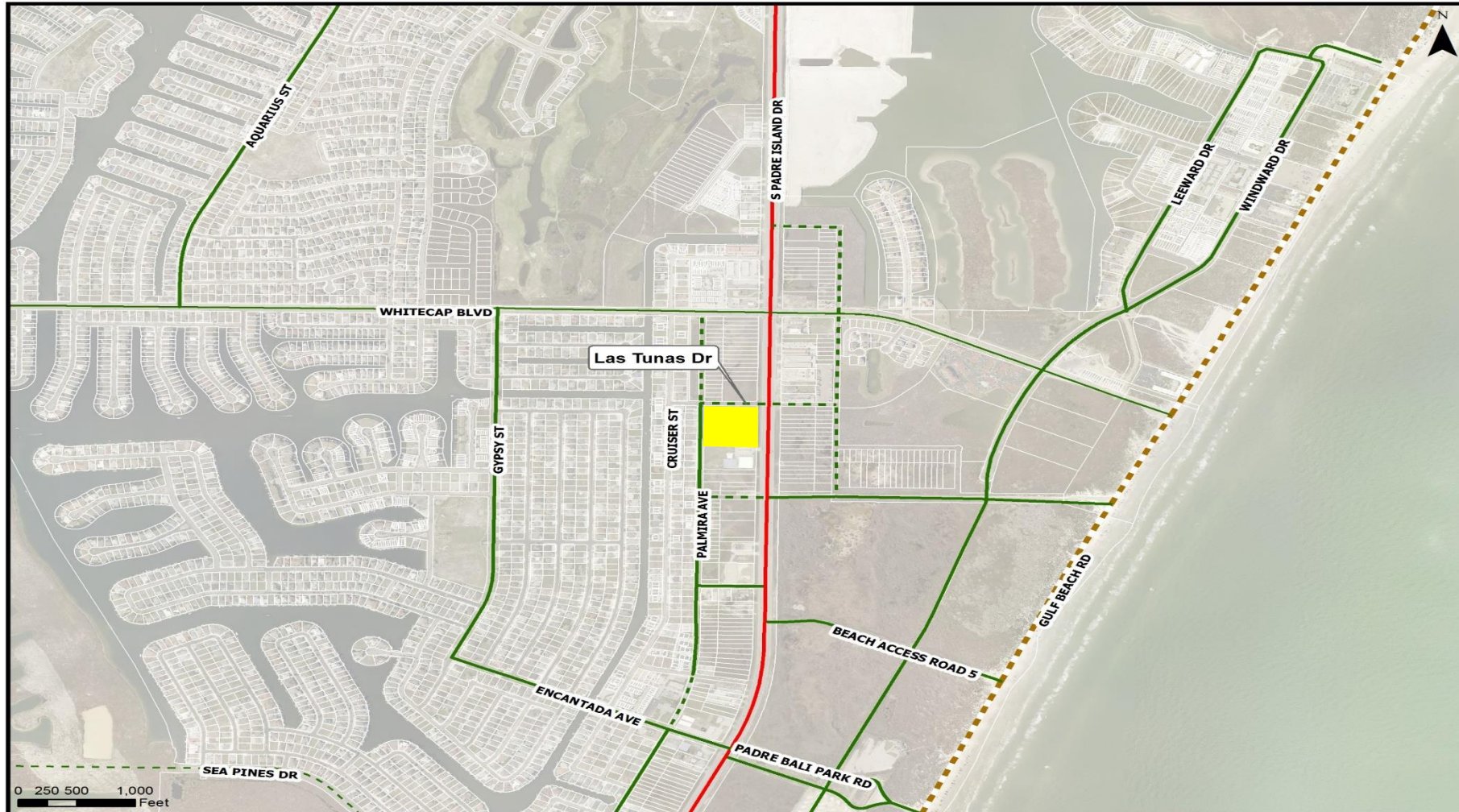
Urban Transportation Plan Amendment: Deletion of a Portion of Las Tunas Drive



Planning Commission Presentation
May 30, 2018

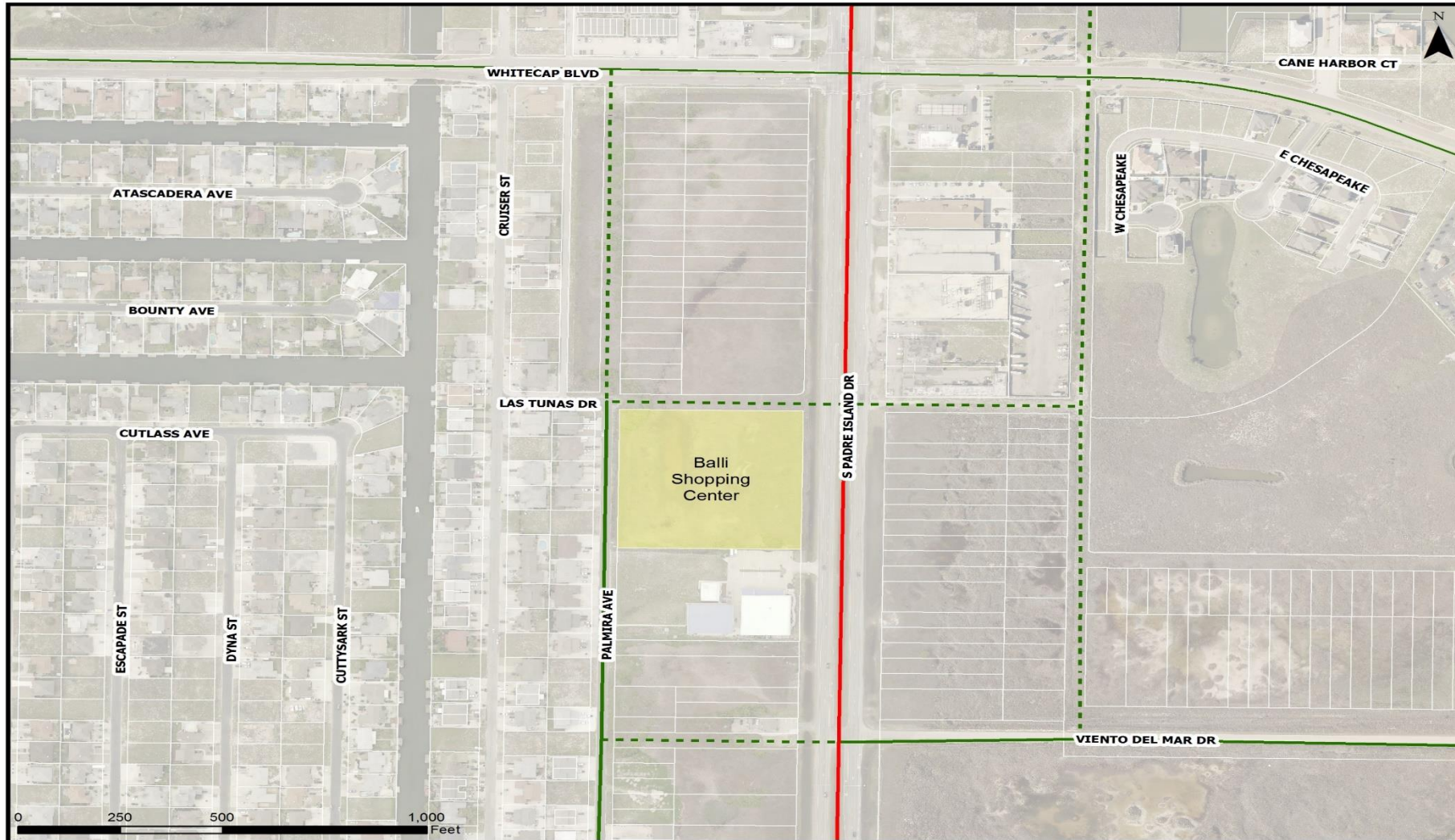


Subject Property



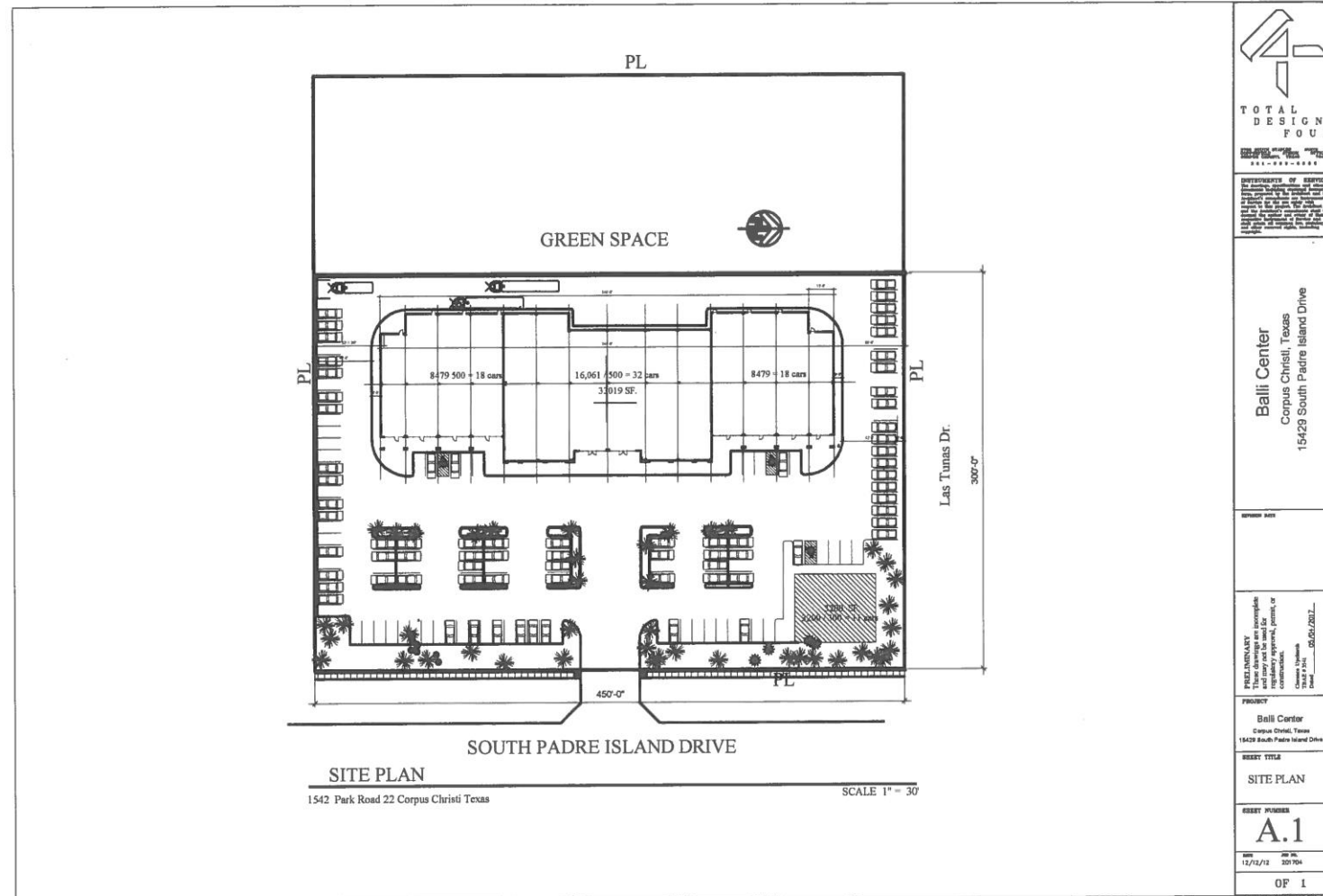


Current Plan





Site Plan



X:\p\PROJECTS\201409 shopping center\TITLEBLOCK201409.dwg



Proposed Amendment

- Deletes a portion of Las Tunas Drive, a proposed C1 Collector, from Palmira Avenue to South Padre Island Drive
- Removes the need for ROW dedication of platted land.
- Eliminates time and expense to mitigate wetlands to construct the road.

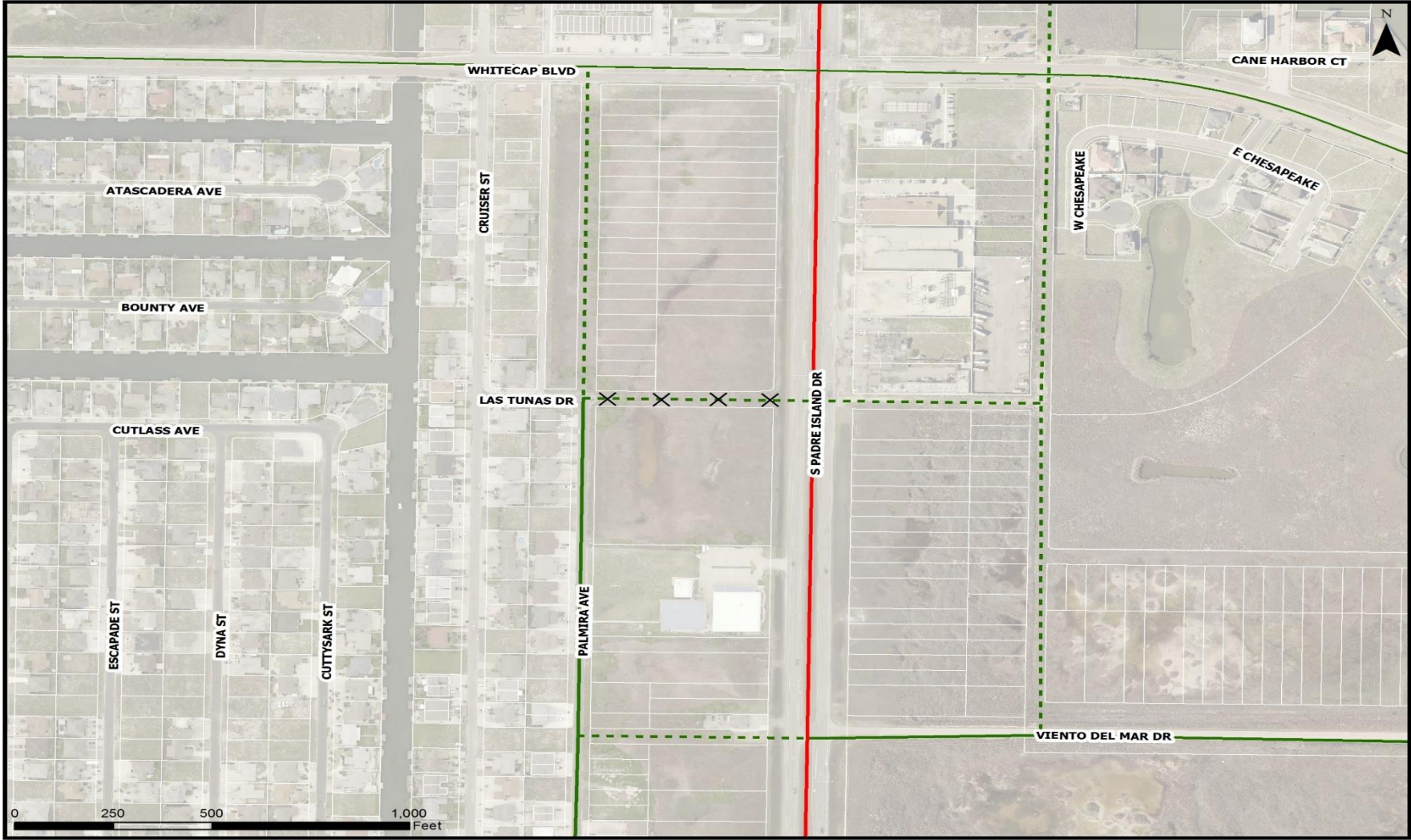


Wetlands





Proposed Amendment





Recommendation

Staff recommends approval of the UTP amendment as presented for the following reasons:

- 0.25 to 0.50-mile collector spacing requirements are maintained.
 - Adequate residential traffic circulation is maintained.
 - The need for additional vehicles to access Park Road 22 is reduced by the developer providing a pedestrian/golf cart access to the shopping center.
 - Impacts to wetlands are reduced.
-