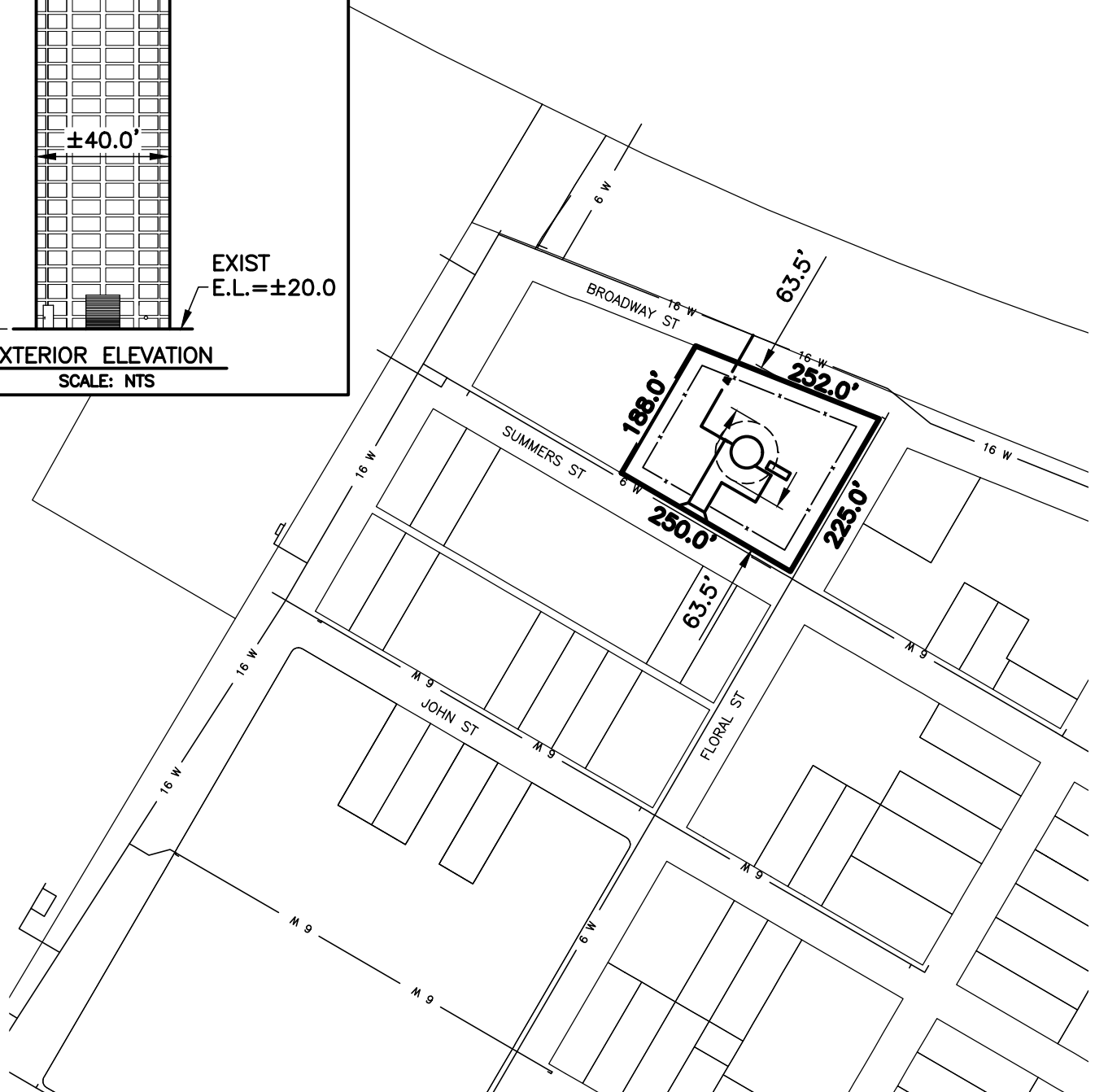
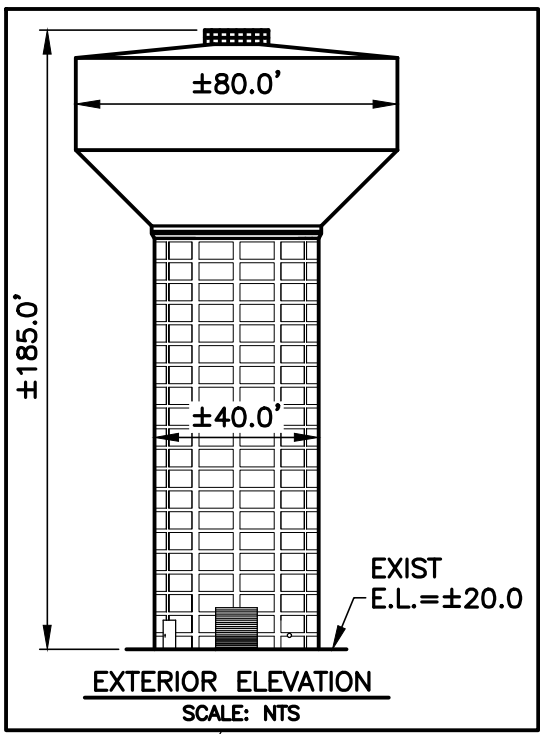


U:\Corpus Christi\050024.00\_Elevated Water Storage Tanks-City-Wide\004 Storry and Nueces Bay Elev Storage Tanks\Drawings\Exhibits - Imagery\EST - LOCATION EXHIBITS.dwg  
Monday June 06, 2016, 2:29pm



**NOTES:**

1. THE PROPOSED NUECES BAY ELEVATED STORAGE TANK TO HOLD A STORAGE CAPACITY OF 1.25 MG.
2. THIS LAYOUT WILL REQUIRE APPROXIMATELY 175 LF OF WATERLINE TO CONNECT ELEVATED STORAGE TANK TO THE CITY'S WATER SYSTEM.
3. FOR INFORMATIONAL PURPOSES ONLY.
4. DIMENSIONS LISTED ARE ANTICIPATED MAXIMUM DIMENSIONS.



TBPE FIRM NO. F-366  
TBPLS FIRM NO. 10126500

engineers | architects | surveyors  
801 NAVIGATION, SUITE 300  
CORPUS CHRISTI, TX 78408  
PH. (361) 883-1984  
FAX (361) 883-1986

WWW.LNVINC.COM

ELEVATED WATER STORAGE TANKS - CITY WIDE (ACR PHASE 3)  
CORPUS CHRISTI, TEXAS

**NUECES BAY ELEVATED STORAGE TANK  
PROPOSED SITE LAYOUT**



SCALE: 1"=200'