

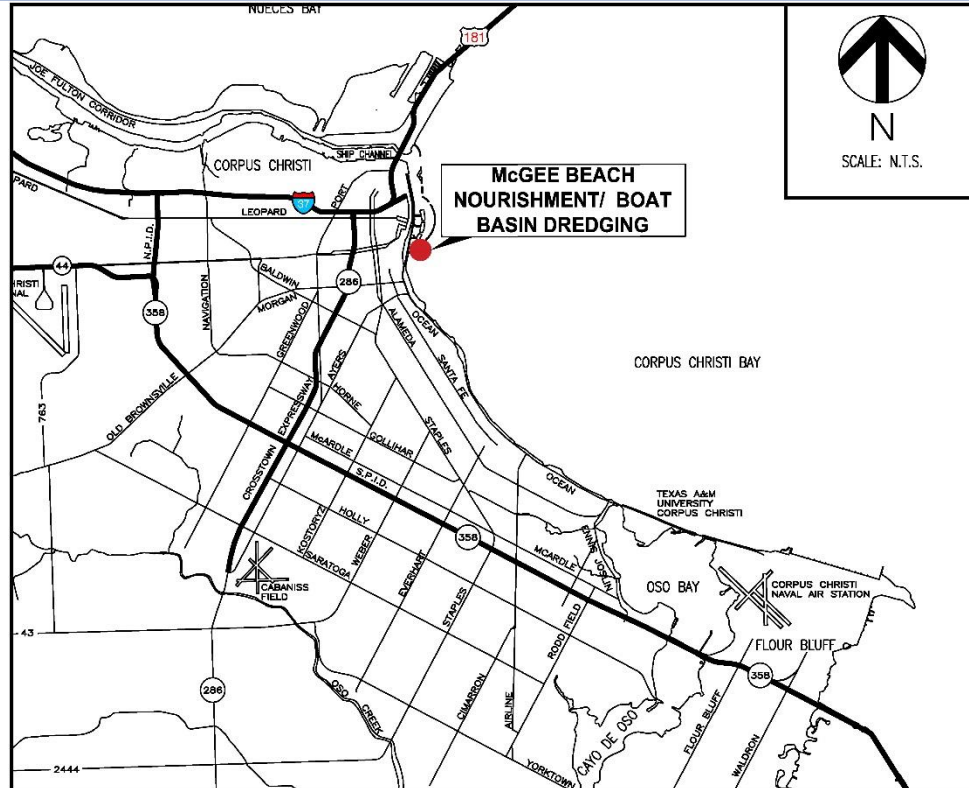
# **McGee Beach Nourishment – Boat Basin Dredging Type A Sales Tax - Seawall**



Type A Board Presentation  
August 20, 2018

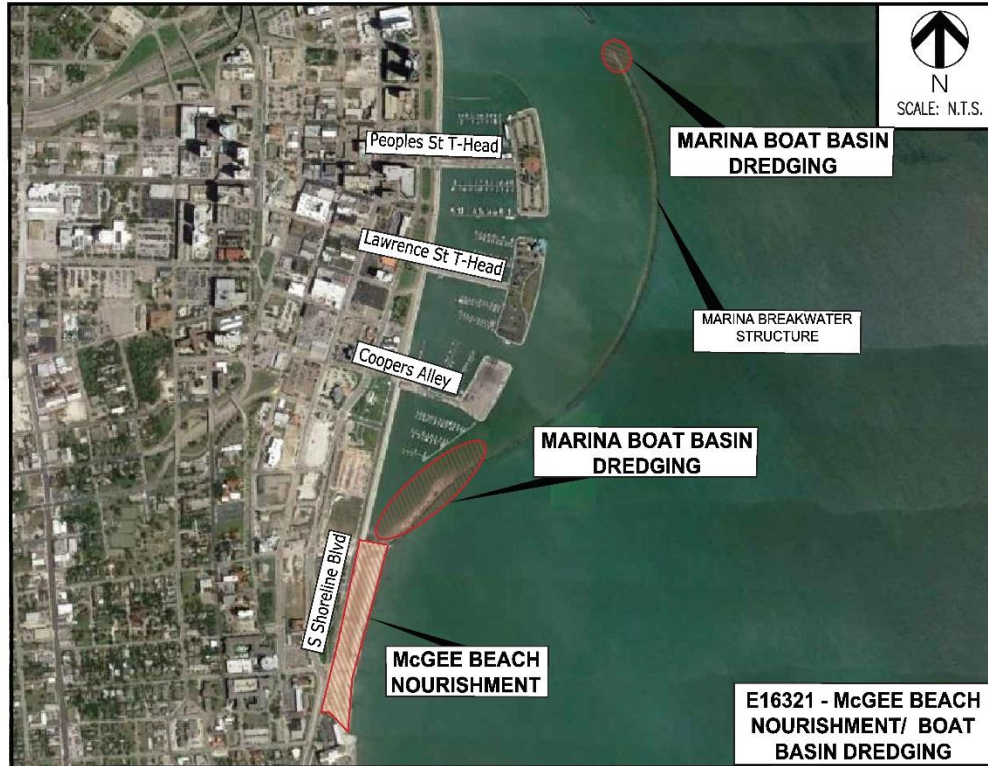
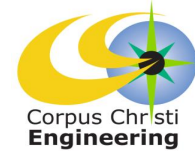


# Project Location



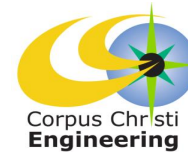


# Project Vicinity





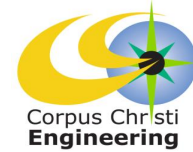
# Project Scope



- Shoaling in Downtown Marina entrance and southern end of boat basin results in navigation hazard.
  - Dredging planned to improve navigation
  - Dredge material used to nourish McGee Beach if suitable quality
- Combine dredging/nourishment plans into Marina Breakwater structural improvements project.
  - Cost efficiency and consistency in design, permit coordination, and construction
  - Minimize disruption to Marina operations, tourists, and local citizens who utilize facilities
- USACE permitting required for the following activities, and a major component of this item.
  - Dredging in navigable waters
  - Disposal of dredged material
  - Structural repairs of the Breakwater



# Project Schedule



2018						2019						2020								
S	O	N	D	J	F	M	A	M	J	J	A	S	O	N	D	J	F	M	A	M
Design									Bid/ Award			Construction								

Projected Schedule reflects City Council award in September 2018 with anticipated completion in May 2020.