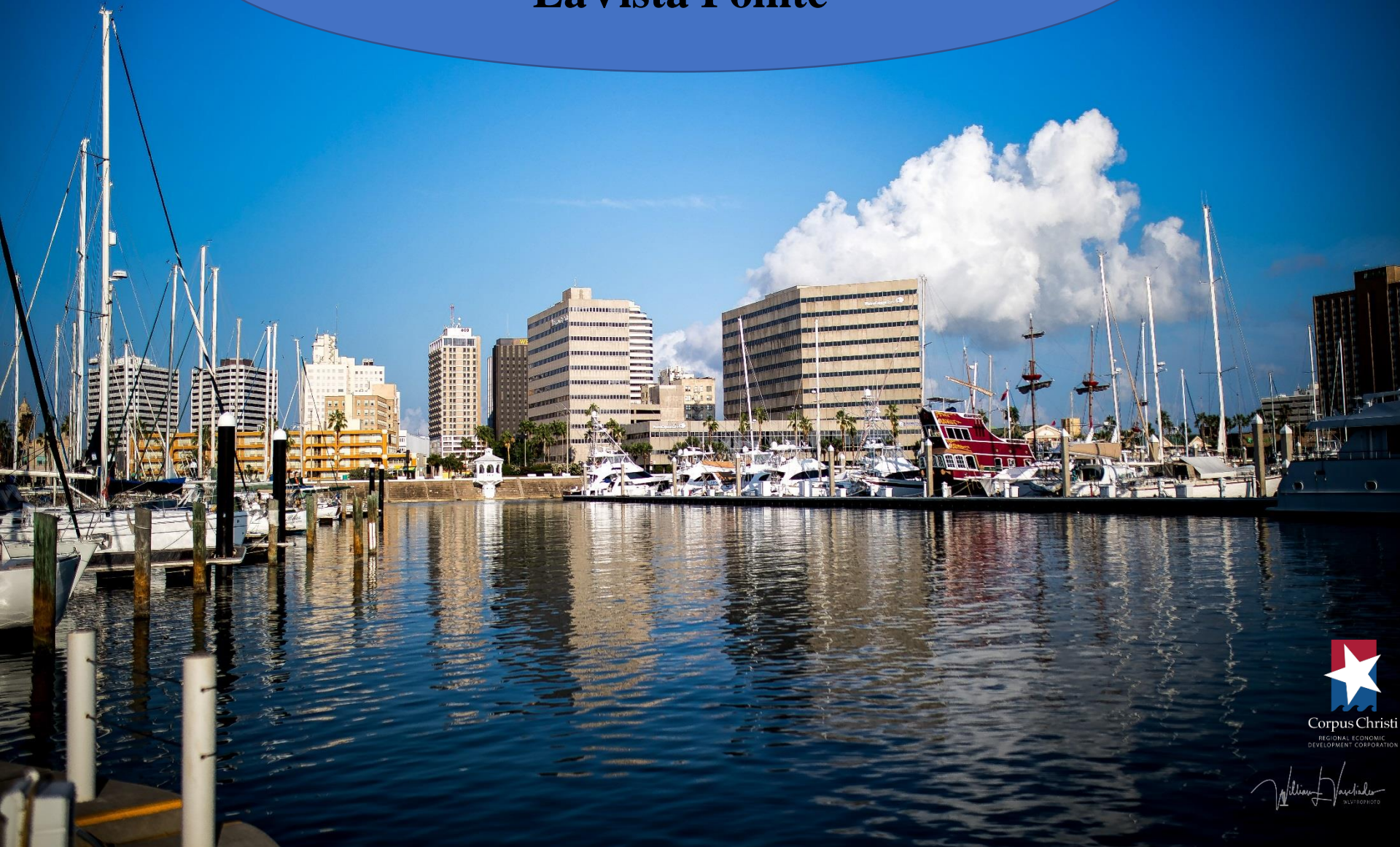


**Corpus Christi
City Council /CCREDC
LaVista Pointe**



Corpus Christi
REGIONAL ECONOMIC
DEVELOPMENT CORPORATION

William Vasquez
WVPHOTO



Economic Development Tools

- **Located with a Texas Enterprise Zone-20% of residents below poverty line.**
- **\$14 million in investment**
- **8 full-time jobs**
- **Begin construction by July 1, 2019**
- **Must have the certificate of Occupancy on the whole project before the grant is paid out. (rear loaded)**
- **Complies with new Type B guidelines following the City Council/Type B Board/CCREDC workshop**
- **To be used for infrastructure**
- **In the next ten years the the City would receive\$60,533 without development. With this development the City will receive \$806,331 over the same ten years. Return on Investment of 24.4% and a payback of 4.6 years**

LaVista Pointe will be located on the northwest end of North Beach at
entrance to Corpus Christi



Project Site Plan







Thank you