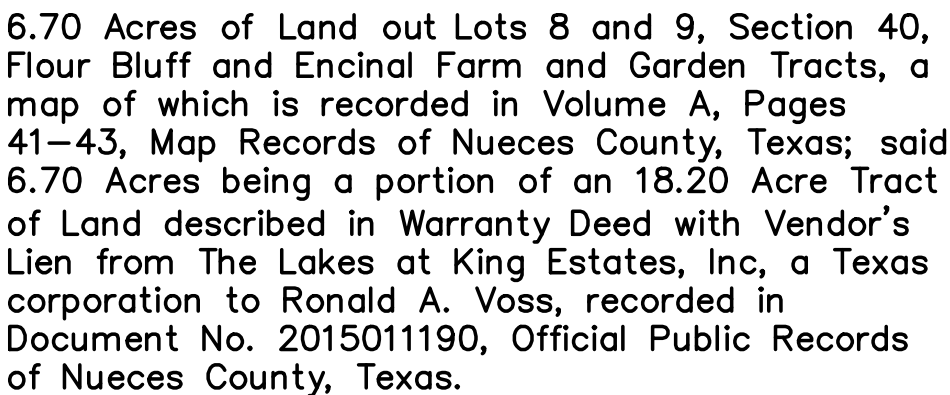


- 1.) Total platted area contains 6.70 Acres of Land. (Includes Street Dedication)
- 2.) The receiving water for the storm water runoff from this property is the Oso Bay. The TCEQ has classified the aquatic life use for the Oso Bay as "exceptional" and "oyster waters". The TCEQ also categorized the receiving water as "contact recreation" use.
- 3.) Grid Bearings and Distances shown hereon are referenced to the Texas Coordinate System of 1983, Texas South Zone 4205, and are based on the North American Datum of 1983(2011) Epoch 2010.00.
- 4.) By graphic plotting only, this property is in Zones "B" and "C" on Flood Insurance Rate Map, Community Panel No. 485464 0316 C, City of Corpus Christi, Texas, which bears an effective date of July 18, 1985 and it is not located in a Special Flood Hazard Area.
- 5.) The yard requirement, as depicted, is a requirement of the Unified Development Code and is subject to change as the zoning may change.
- 6.) Driveway access to Division Road from Lots 9 through 12, Block 1 is prohibited.



Submitted: 9/20/17
SCALE: 1"=60'
JOB NO.: 23808.B7.01
SHEET: 1 of 2
DRAWN BY: XG
© 2017 by Urban Engineering
urbansurvey1@urbaneng.co

Legend:

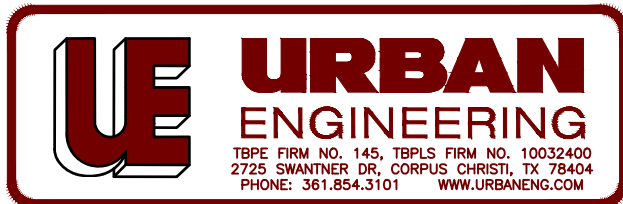
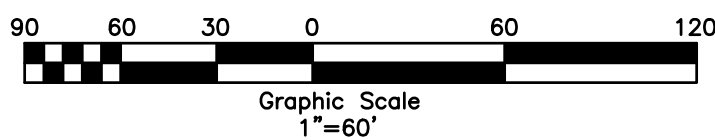
- 5/8" I.R. with red plastic cap stamped "URBAN ENGR CCTX" Set
- 5/8" I.R. with red plastic cap stamped "URBAN ENGR CCTX" Found
- ⊙ MAG Nail with washer stamped "URBAN ENGR CCTX" Set



LINE	BEARING	DISTANCE
L1	N73°51'14"W	50.00'
L2	N13°35'50"E	12.26'
L3	N13°35'50"E	45.87'
L4	N13°35'50"E	67.10'
L5	N05°53'25"W	94.70'
L6	N07°52'21"E	100.26'
L7	N23°29'27"E	77.34'
L8	N61°28'49"W	16.05'
L9	S13°29'53"W	60.00'
L10	N13°29'53"E	8.42'
L11	S13°29'53"W	32.79'
L12	S13°29'53"W	35.64'
L13	N13°35'50"E	14.13'
L14	S13°35'50"W	8.24'
L15	S13°35'50"W	22.37'
L16	N13°35'50"E	22.37'
L17	S13°35'50"W	22.37'
L18	N13°36'23"E	69.39'
L19	N13°36'23"E	69.98'
L20	N13°36'23"E	8.47'
L21	S13°36'23"W	58.63'
L22	N13°36'23"E	2.29'
L23	N13°36'23"E	2.29'
L24	S07°23'02"W	9.86'
L25	S61°28'49"E	1.05'
L26	S28°31'43"W	6.10'
L27	S28°31'43"W	24.54'
L28	S28°31'43"W	50.64'
L29	S07°23'02"W	58.47'
L30	S07°23'02"W	91.71'
L31	S07°23'02"W	68.33'
L32	S28°31'43"W	55.64'

CURVE	DELTA ANGLE	RADIUS	ARC LENGTH	CHORD BEARING	CHORD LENGTH
C1	12°02'48"	920.00'	193.44'	S07°34'59"W	193.08'
C2	45°14'23"	34.50'	27.24'	S84°06'01"E	26.54'
C3	180°29'19"	50.00'	100.00'	N16°28'33"W	110.00'
C4	45°14'23"	34.50'	27.24'	N51°08'55"E	26.54'
C5	25°58'51"	200.00'	90.69'	S15°32'18"W	89.92'
C6	11°03'31"	790.00'	152.48'	N08°04'38"E	152.24'
C7	3°51'58"	490.00'	33.06'	N14°12'47"E	33.06'
C8	3°56'22"	440.00'	30.25'	N14°10'35"E	30.25'
C9	11°03'31"	740.00'	142.83'	S08°04'38"W	142.60'
C10	25°58'51"	250.00'	113.36'	N15°32'18"E	112.39'
C11	90°02'33"	10.00'	15.71'	S18°28'33"E	14.14'
C12	3°36'08"	430.00'	27.03'	S11°47'47"W	27.03'
C13	55°09'44"	36.00'	34.66'	N17°35'10"W	33.34'
C14	27°47'29"	59.00'	28.81'	N85°16'17"W	76.01'
C15	45°52'36"	36.00'	28.83'	N31°41'09"E	28.06'
C16	4°50'59"	480.00'	40.63'	S11°10'21"W	40.62'
C17	13°28'11"	455.00'	106.97'	N06°51'45"E	106.72'
C18	3°54'04"	465.00'	31.66'	S14°11'43"W	31.66'
C19	11°03'31"	765.00'	147.65'	S08°04'38"W	147.42'
C20	25°58'51"	225.00'	102.03'	S15°32'18"W	101.15'
C21	2°04'12"	610.00'	22.04'	N12°34'17"E	22.04'
C22	4°09'09"	610.00'	44.21'	S09°27'37"W	44.20'
C23	5°24'25"	610.00'	57.57'	N10°54'11"E	57.54'
C24	0°48'55"	610.00'	8.68'	N07°47'30"E	8.68'
C25	3°46'31"	790.00'	52.05'	N11°43'08"E	52.04'
C26	3°55'42"	790.00'	54.16'	N07°52'02"E	54.15'
C27	3°21'18"	790.00'	46.26'	S04°13'32"W	46.25'
C28	5°04'44"	740.00'	65.60'	S08°59'50"W	65.58'
C29	3°54'35"	740.00'	50.50'	S04°30'10"W	50.49'
C30	2°04'12"	740.00'	26.73'	N12°34'17"E	26.73'
C31	49°46'14"	50.00'	43.43'	N81°50'05"W	42.08'
C32	40°29'17"	50.00'	35.33'	N36°42'19"W	34.60'
C33	61°53'42"	50.00'	54.01'	N14°29'10"E	51.43'
C34	28°20'05"	50.00'	24.73'	S59°36'04"W	24.48'
C35	3°38'33"	200.00'	12.71'	N04°22'09"E	12.71'
C36	2°23'05"	200.00'	77.98'	S17°21'34"W	77.48'
C37	2°32'05"	250.00'	11.06'	N03°48'55"E	11.06'
C38	8°31'41"	250.00'	37.21'	S09°20'48"W	37.18'
C39	14°55'05"	250.00'	65.09'	S21°04'11"W	64.91'
C40	17°21'20"	36.00'	10.90'	N01°19'03"E	10.86'
C41	37°48'24"	36.00'	23.75'	S26°15'50"E	23.33'
C42	7°47'51"	36.00'	4.90'	N12°38'47"E	4.90'
C43	38°04'45"	36.00'	23.93'	S35°35'05"W	23.49'

Preliminary, this document shall not be recorded for any purpose and shall not be used or viewed or relied upon as a final survey document.



Submitted: 9/20/17
 SCALE: 1"=60'
 JOB NO.: 23808.B7.01
 SHEET: 2 of 2
 DRAWN BY: XG
 © 2017 by Urban Engineering
 urbansurvey1@urbaneng.com