

# **Urban Transportation Plan Amendment: The Regional Parkway from Park Road 22 to State Highway 286**



Planning Commission Presentation  
March 6, 2019

# Regional Parkway Planning and Environmental Linkages Study(PELS)

**SEGMENT A**  
PARK RD. 22 - RODD FIELD RD.

**SEGMENT B**  
RODD FIELD RD. - SH 286



# Purpose and Need for Regional Parkway



Reduce traffic congestion and facilitate regional mobility and connectivity



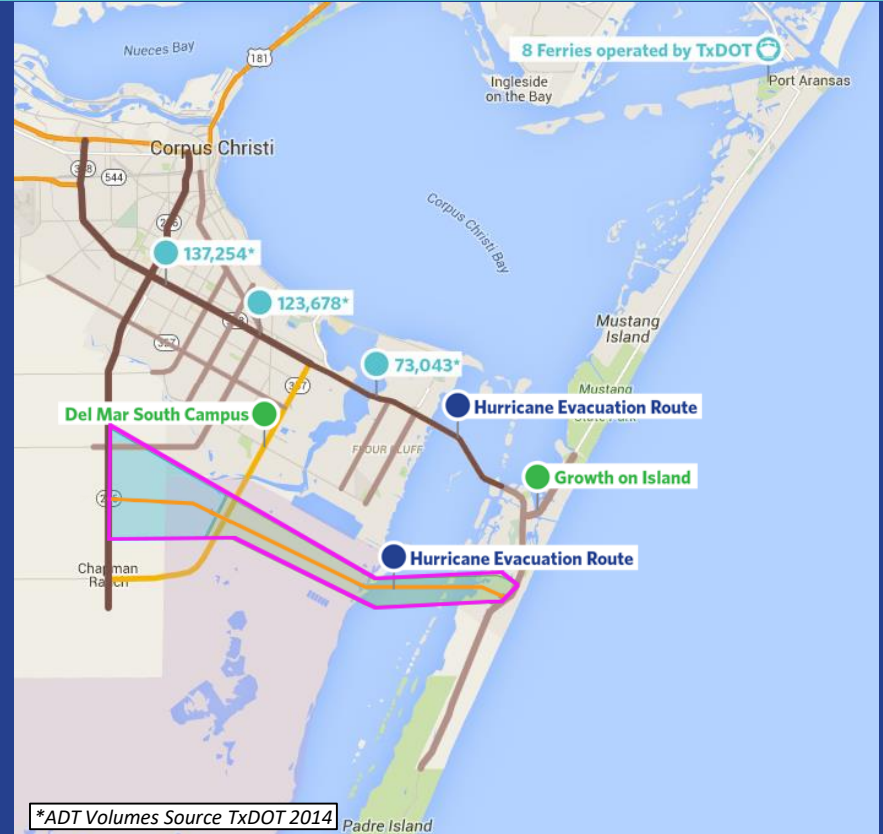
Address safety issues and provide an alternate hurricane evacuation route



Facilitate economic and population growth



Preserve right-of-way and adopt into the City Urban Transportation Plan



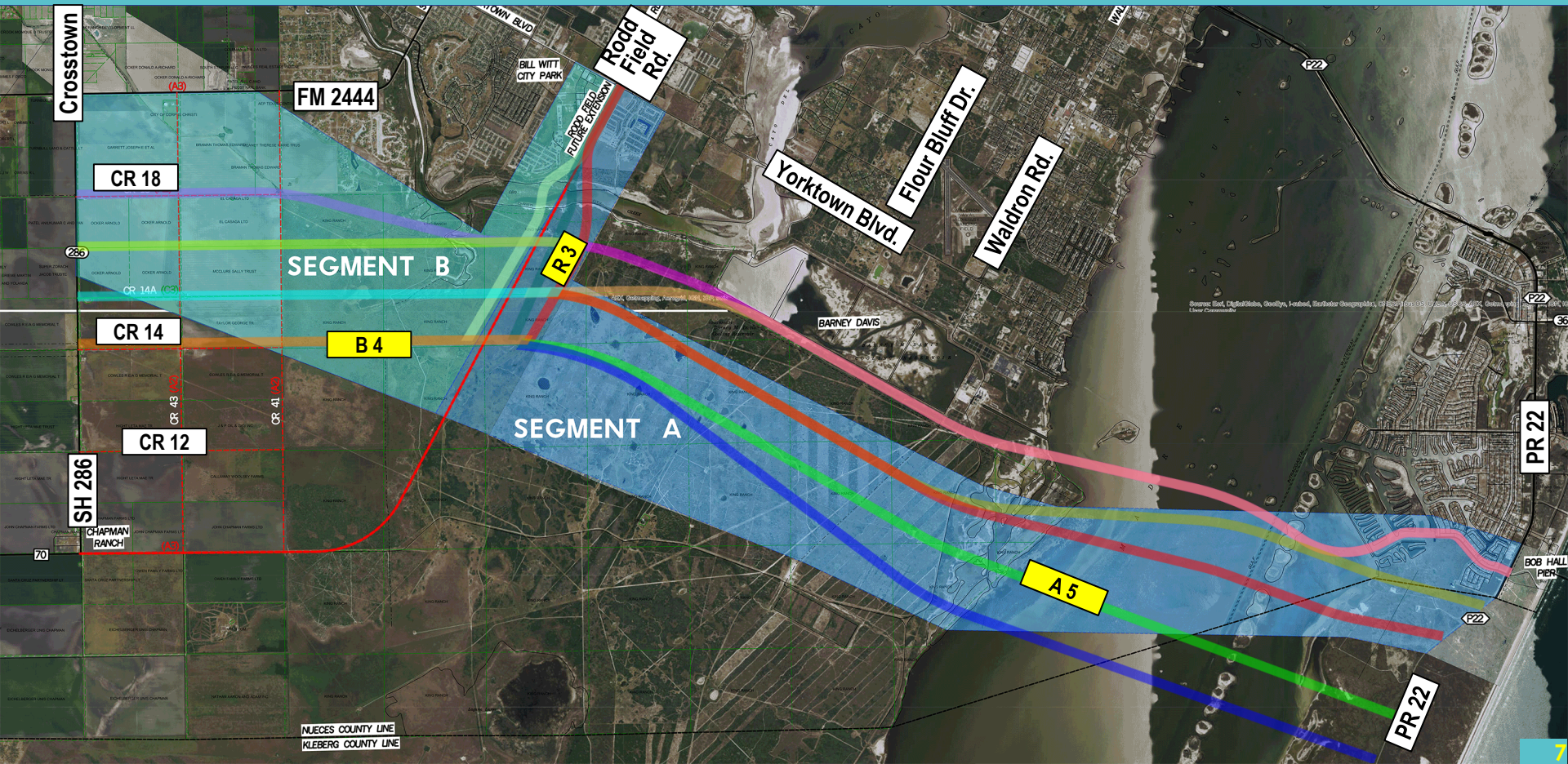
# Potential Vision



An at-grade multi-lane transportation corridor designed to accommodate multiple modes for optimal mobility.



# Highest Ranked Alternatives









# Scope

---

- Develop Regional Parkway to add mobility capacity and to serve as secondary hurricane evacuation route for South Padre Island.
- Add Regional Parkway between Park Road 22 and State Highway 286 to UTP map.
- Designate as RA3 Primary Rural Arterial in UTP map.
- Support by Planning, Development Services, & Traffic Engineering.

*Staff & the Transportation Advisory Commission recommend approval of this UTP amendment.*

---