

Slough Road Improvement Project

(Rodd Field Road to Amethyst Drive)

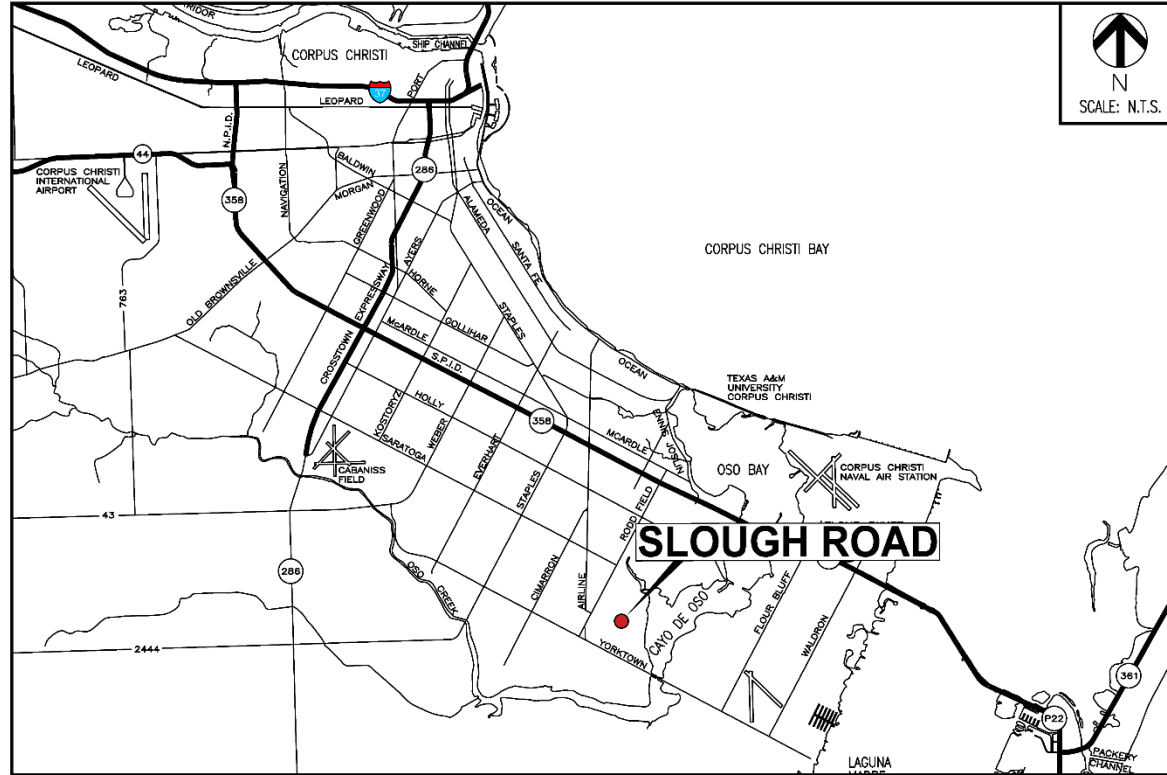
Type B Funded



Council Presentation
April 14, 2019

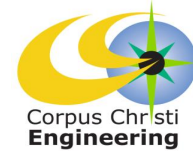


Project Location





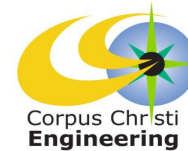
Project Vicinity





Project Scope

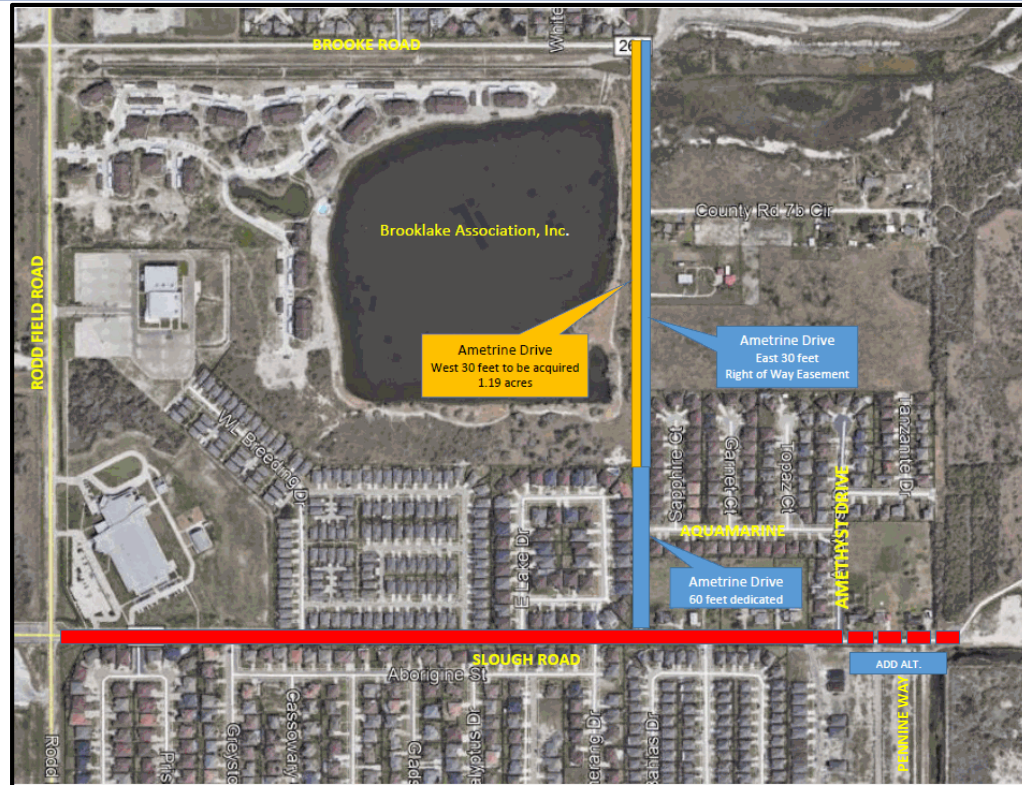
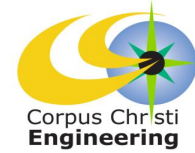
Slough Road Improvement Project



- **SLOUGH ROAD – RODD FIELD TO AMETHYST**
 - ✓ TYPE B FUNDED
 - ✓ Full-depth RECONSTRUCTION
 - ✓ Existing 2-lane HMA roadway with dedicated turn lanes at Rodd Field & Ametrine
 - ✓ New sidewalks, ADA ramps, pavement markings & signage
 - ✓ Utility improvements for water, wastewater, gas & storm water
 - ✓ Additive Alternates 1, 2, & 3
- **AMETRINE ROAD – SLOUGH TO BROOKE**
 - ✓ DEVELOPER PARTICIPATION (BOND 2008) & DEVELOPER CONTRIBUTIONS
 - ✓ Full-depth CONSTRUCTION
 - ✓ Land Acquisition - \$40,000
 - ✓ New 2-lane HMA roadway (Brooke to Aquamarine)
 - ✓ Roadside ditches, no sidewalks, no curb & gutter
 - ✓ New water line
 - ✓ New 3-lane section (Aquamarine to Slough)
 - ✓ New curb & gutter, new sidewalk and ADA ramps (east side only)
 - ✓ New water line
 - ✓ Limited wastewater to eliminate existing septic tank services
 - ✓ Properties at the northeast corner of Slough/Ametrine intersection

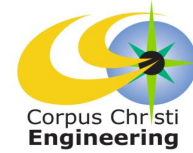


Ametrine Right-of-Way Slough Road Improvement Project



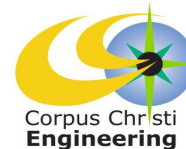


Roadway Configurations





Type B Approved Project List



- **October 16, 2018** – City Council Approved Resolution Authorizing Use of Type B Arterial & Collector Funds (\$10.55 M) for 3 Street Projects:

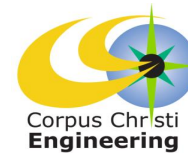
PROJECT	APPROVED BUDGET	STREET ONLY PROJECTED COST	DIFFERENCE
SLOUGH ROAD (Rodd Field to Amethyst)	\$2.20 M	\$2.52 M	(\$320 K)
EVERHART ROAD (SPID to Holly Road)	\$5.30 M	\$6.00 M*	(\$700 K)
HOLLY ROAD (Rodd Field to Ennis Joslin)	\$3.05 M	\$3.05 M*	0

*Note – Reflects probable cost estimate pending actual bids in May 2019



Award Considerations

Slough Road Improvement Project



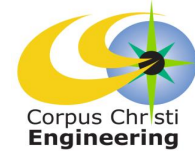
➤ **BASE LOW BID – \$5,217,559**

ADD. ALT.	DESCRIPTION	LOW BID	RECOMMENDATION
1	Widens sidewalk to 8' on Slough (south side)	\$46,364	YES
2	Reconstructs Pennine Way Intersection & extends sidewalk to existing hike & bike	\$64,815	YES
3	Mill/Overlays Slough - Amethyst to Dead End	\$72,151	YES
4	Deletes Ametrine Road/Utility Improvements	(\$913,545)	NO
	Total Base Bid + Additive Alternatives 1-3	\$5,400,890	



Project Schedule

Slough Road Improvement Project



2018							2019							2020							
J	J	A	S	O	N	D	J	F	M	A	M	J	J	A	S	O	D	J	F	M	A
Design							Bid			Construction											

Projected Schedule reflects City Council award in May 2019 with anticipated completion in April 2020.

Questions?