

Urban Transportation Plan (UTP) Amendments in the London Area



Council Presentation
July 16, 2019



Subject Area

(\approx 3.85 sq. miles or 2,464 acres)





Current UTP

C1 Collector:

60' ROW
2 travel lanes
2 parking lanes

C3 Collector

75' ROW
4 travel lanes

P1 Parkway

80' ROW
2 travel lanes
2 parking lane
Hike/bike trail

A1 Arterial

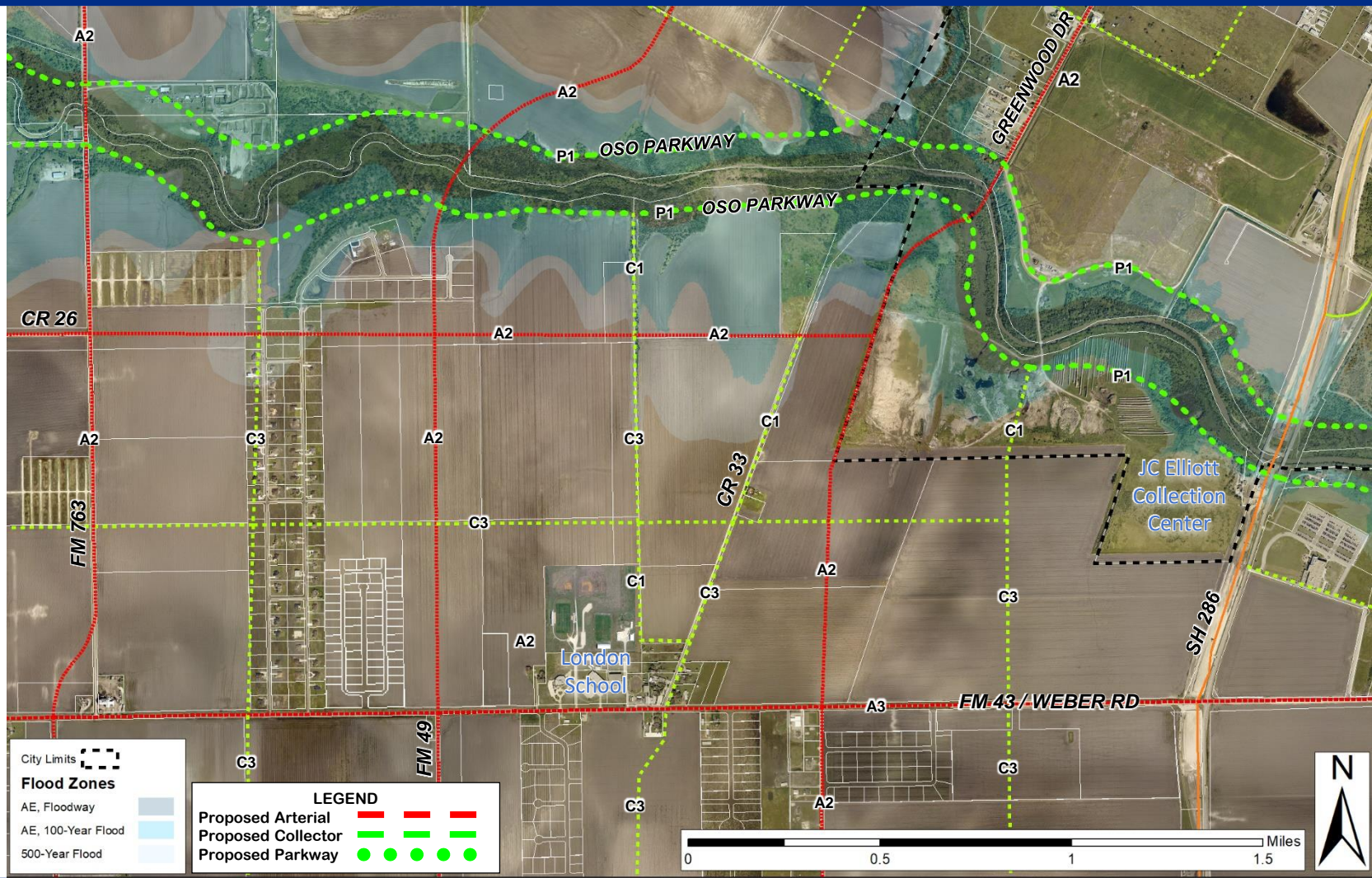
95' ROW
4 travel lanes
Center turn lane

A2 Arterial

100' ROW
4 travel lanes
Median

A3 Arterial

130' ROW
6 travel lanes
Median

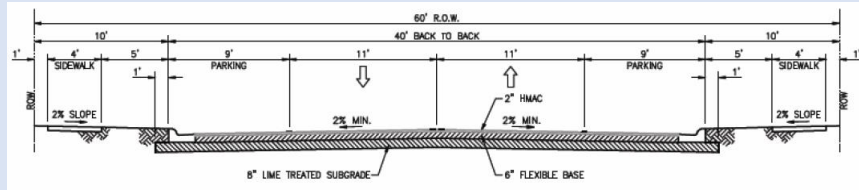




Street Types

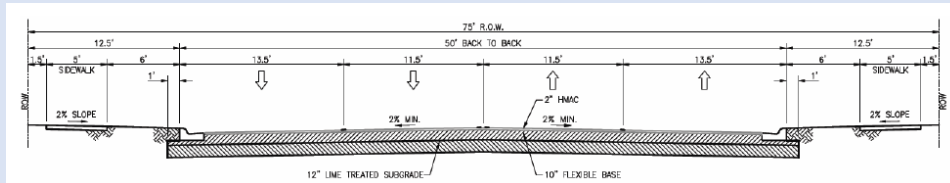
C1 Collector

60' ROW; 2 Travel Lanes; 2 Parking Lanes



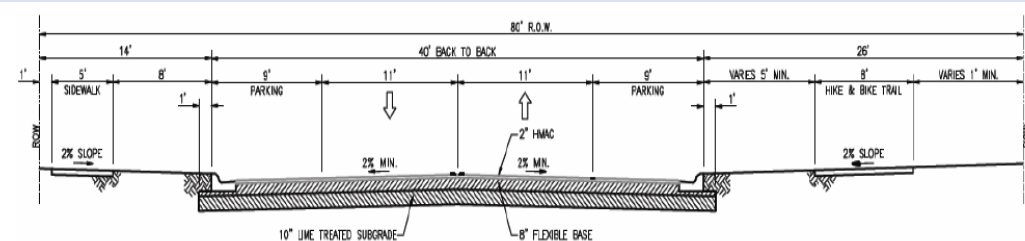
C3 Collector

75' ROW; 4 Travel Lanes



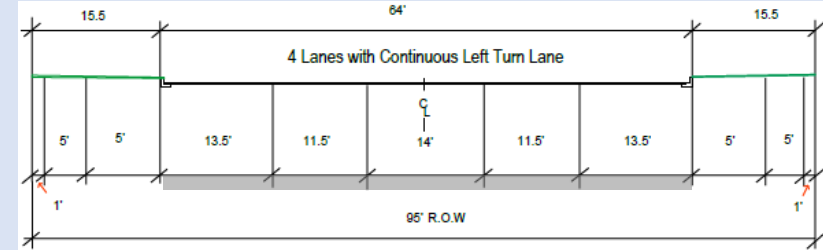
P1 Parkway

80' ROW; 2 Travel Lanes; 2 Parking Lanes; Hike/Bike Trail

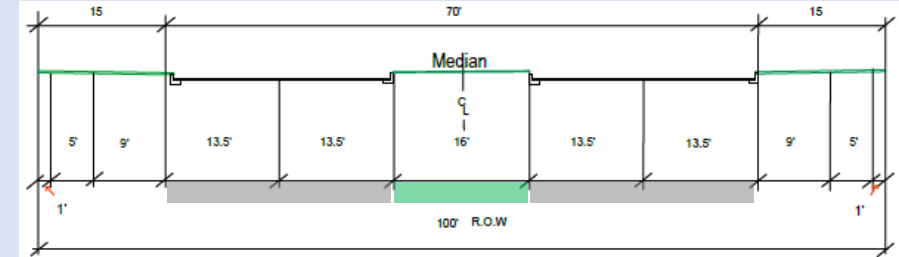


A1 Arterial

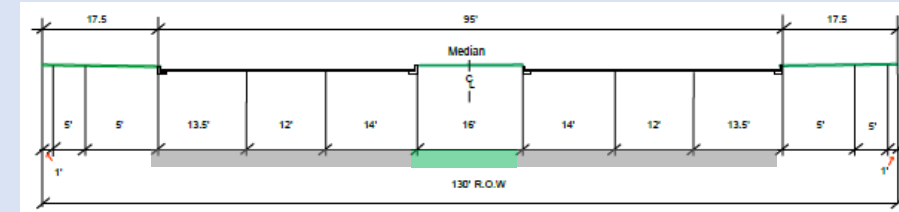
95' ROW; 4 Travel Lanes; Center Turn Lane



A2 Arterial: 100' ROW; 4 Travel Lanes; Median



A3 Arterial: 130' ROW; 6 Travel Lanes; Median





Highlights

- Eliminates bridge construction
- Reduces ROW dedication by up to 45% (from 182 to 105 acres)
- Reduces miles of street construction by 27% (from 18 to 13 miles)
- Adjusts street alignments around development that has already occurred.



Staff & TAC Recommendation

C1 Collector:

60' ROW
2 travel lanes
2 parking lanes

C3 Collector

75' ROW
4 travel lanes

P1 Parkway

80' ROW
2 travel lanes
2 parking lane
Hike/bike trail

A1 Arterial

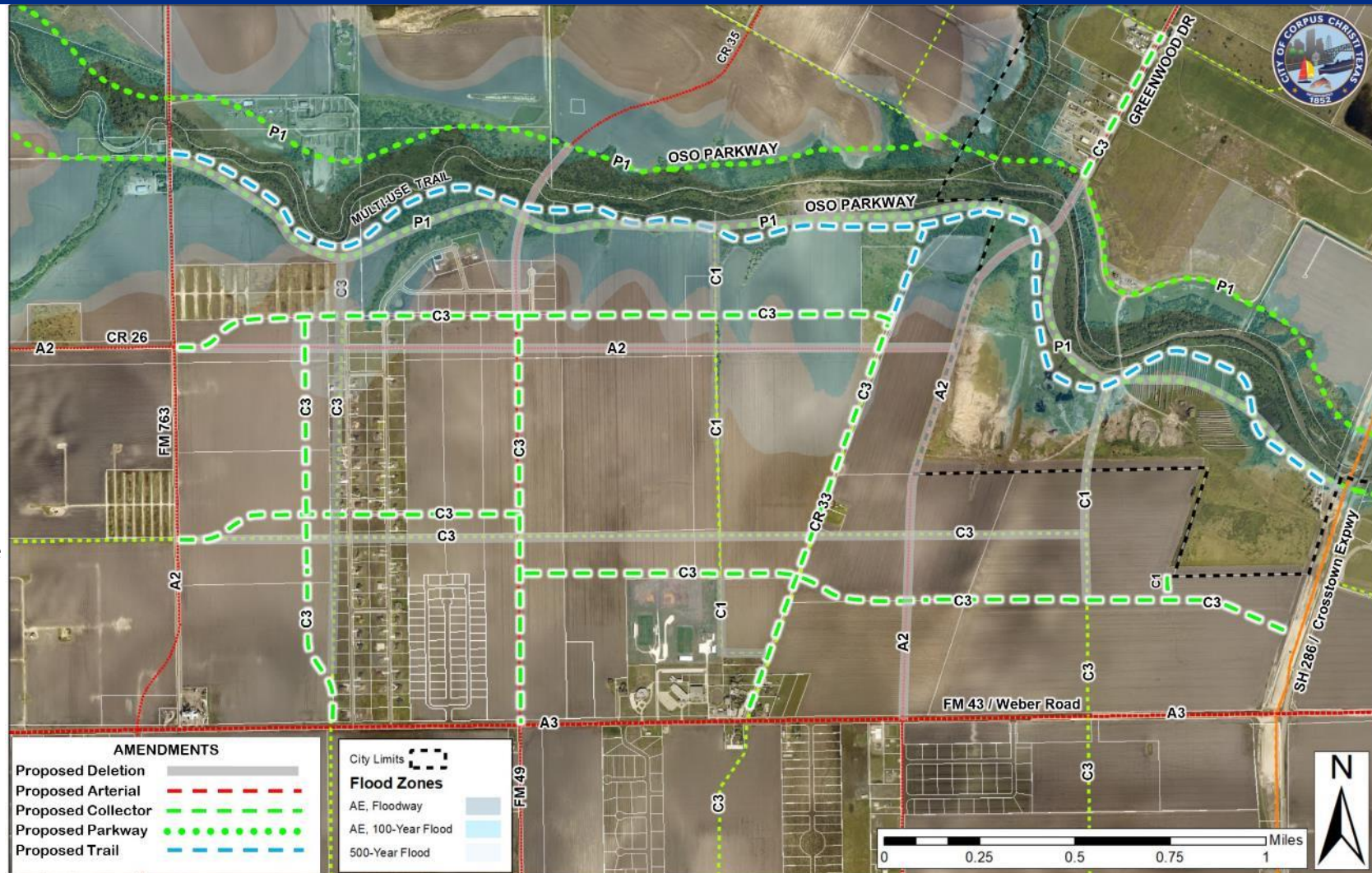
95' ROW
4 travel lanes
Center turn lane

A2 Arterial

100' ROW
4 travel lanes
Median

A3 Arterial

130' ROW
6 travel lanes
Median





Planning Commission Recommendation

C1 Collector:

60' ROW
2 travel lanes
2 parking lanes

C3 Collector

75' ROW
4 travel lanes

P1 Parkway

80' ROW
2 travel lanes
2 parking lane
Hike/bike trail

A1 Arterial

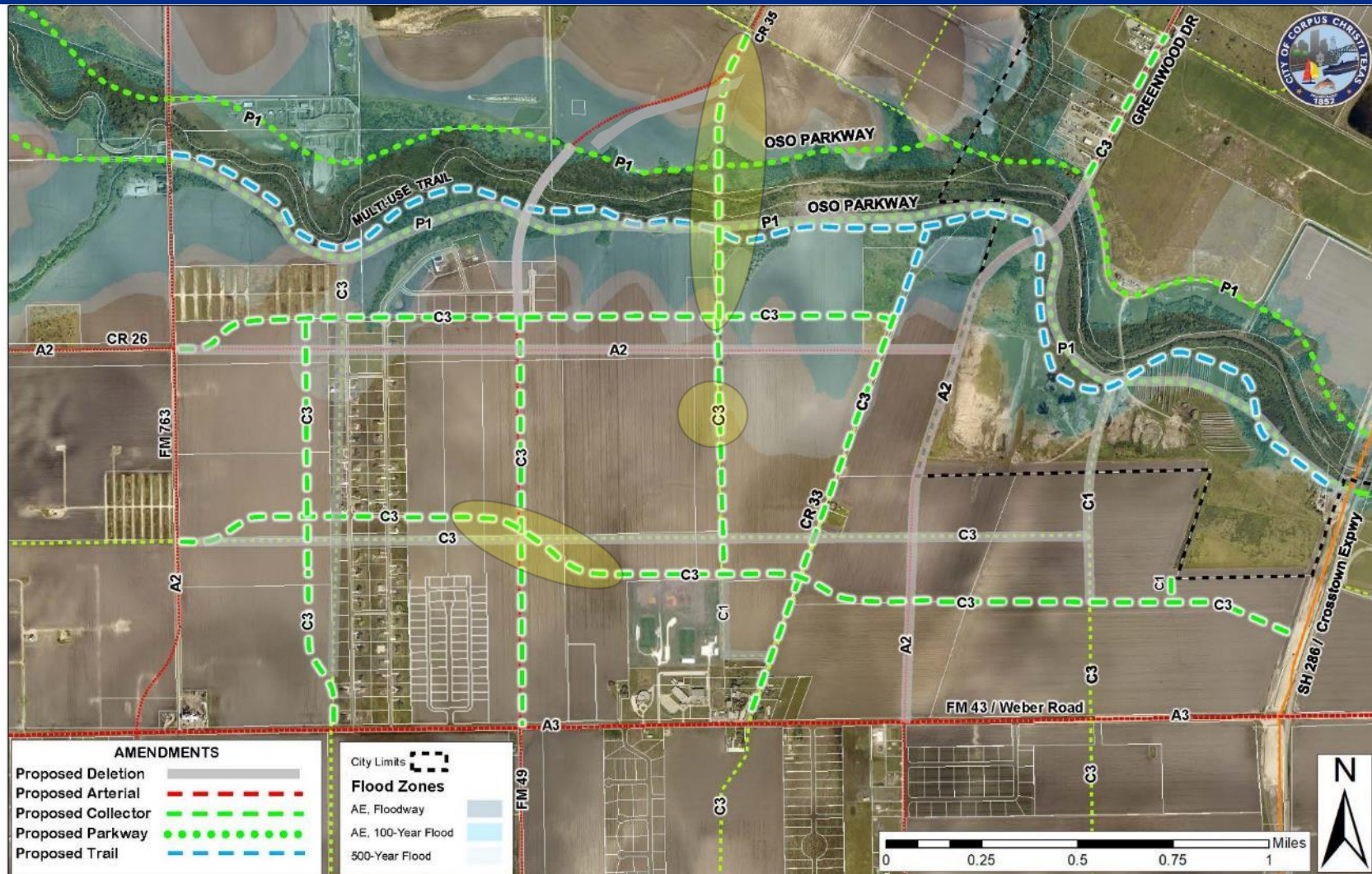
95' ROW
4 travel lanes
Center turn lane

A2 Arterial

100' ROW
4 travel lanes
Median

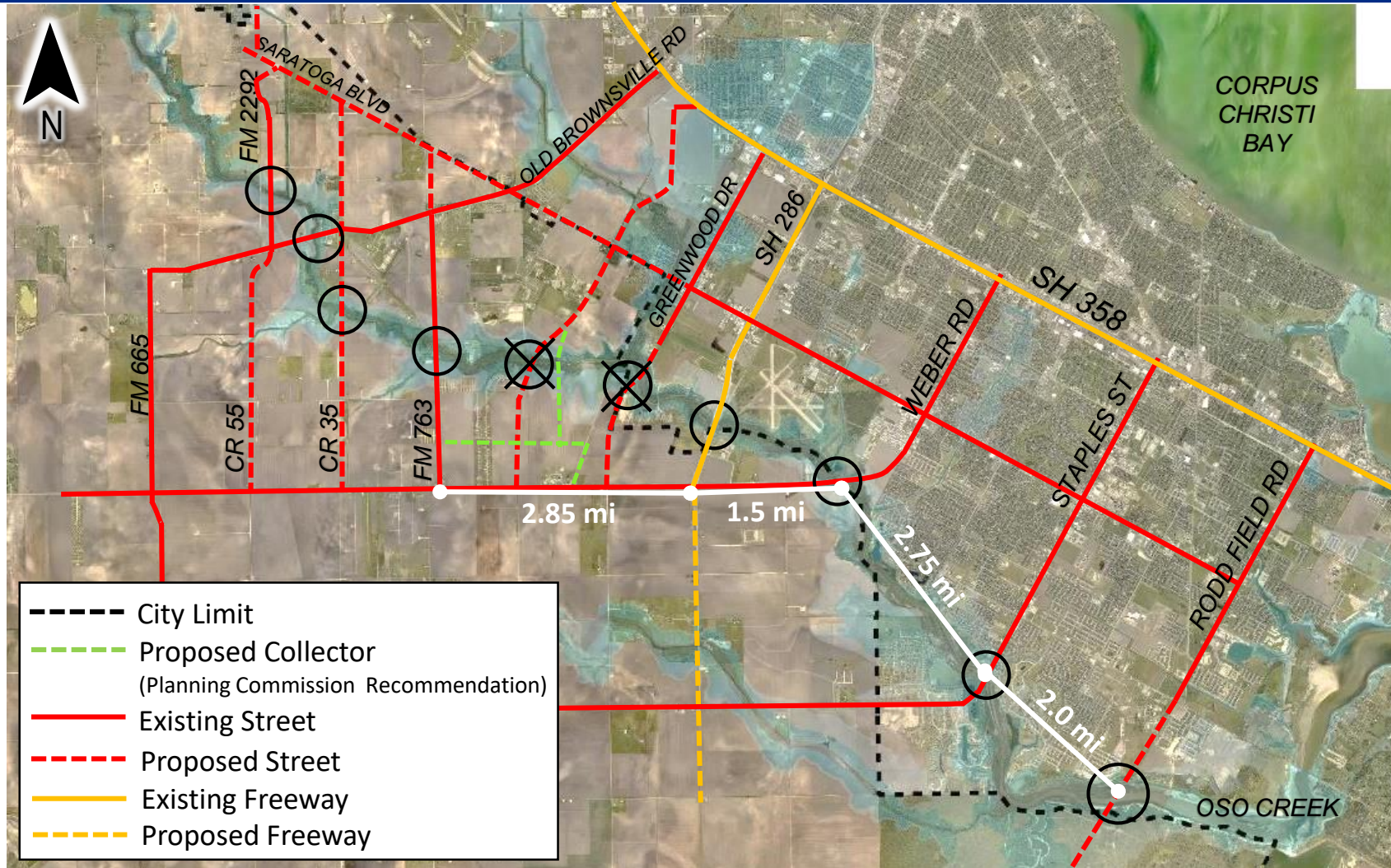
A3 Arterial

130' ROW
6 travel lanes
Median





Oso Creek Bridge Spacing





Recommendations

Staff recommends approval of the proposed amendments as illustrated.

Planning Commission recommends approval of the staff recommendation with the following changes:

- Keep a bridge across the Oso Creek from CR 35 to London ISD,
 - And, upgrade this street from C1 to C3 Collector.
- Adjust the curve in the southernmost east-west collector.



Recommendations

The recommendations:

- Are consistent with City policy/plans.
- Maintain an adequate and efficient street network for proposed land uses.
- Minimize right-of-way dedication requirements from private landowners and reduces miles of public streets.
- Address alignment issues.