

Zoning Case #1119-01

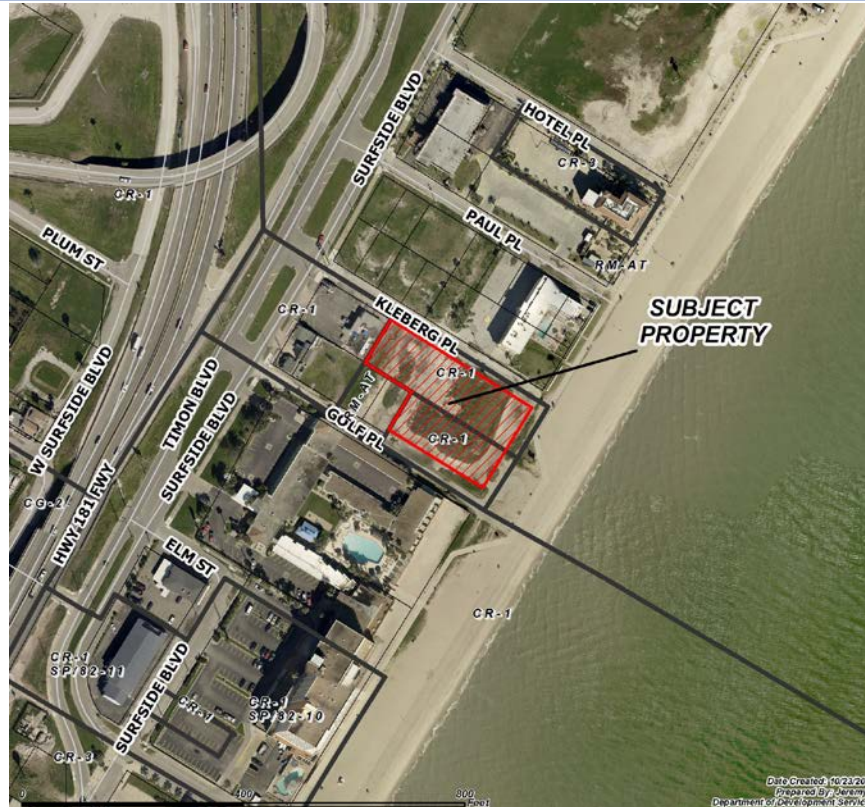
SCCBH, LLC.

**Rezoning for a Property at 213 Kleberg Place
From “CR-1” To “CR-3”**

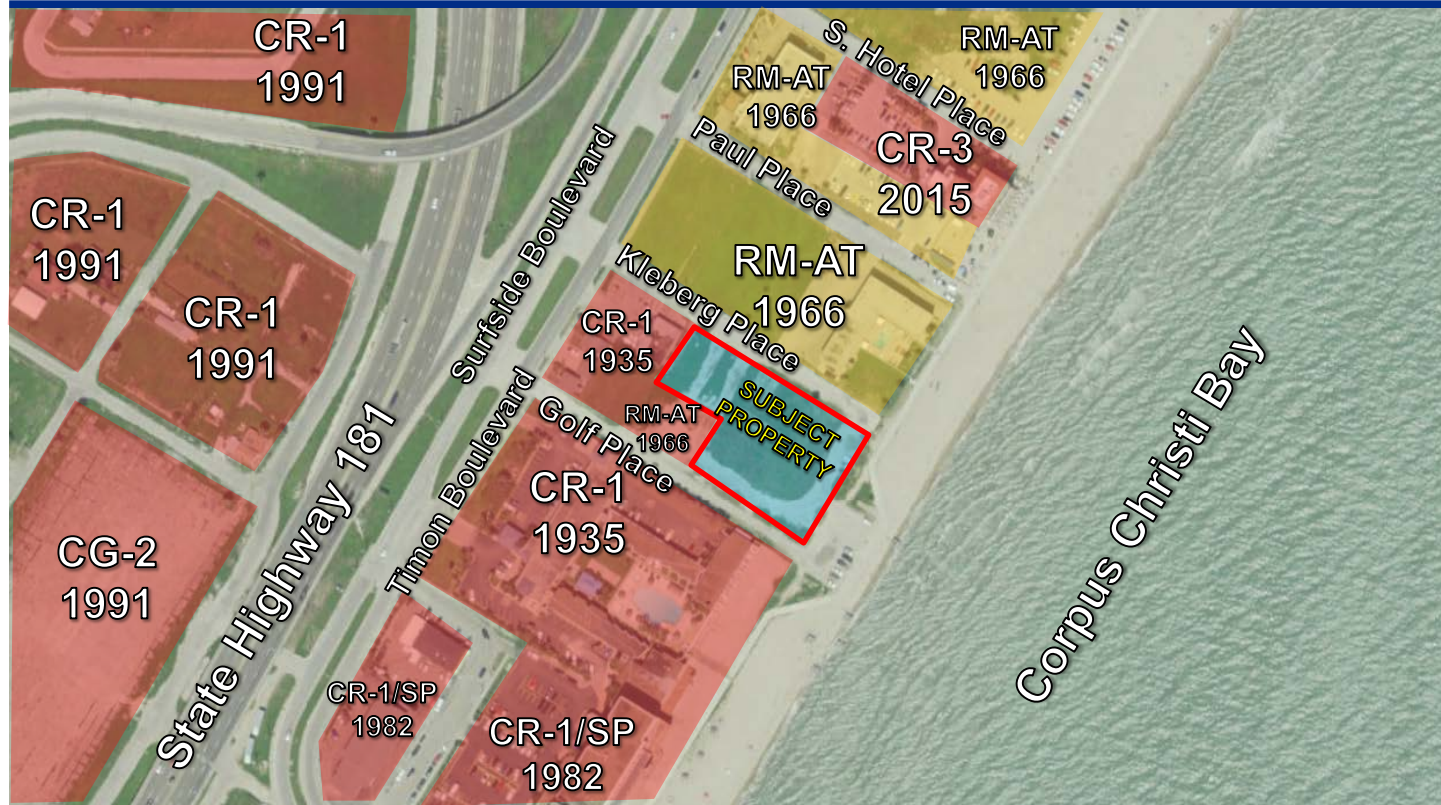


City Council
January 21, 2020

Aerial Overview



Zoning Pattern



Planning Commission and Staff Recommendation

Approval of the
“CR-3” Resort Commercial District

Public Notification

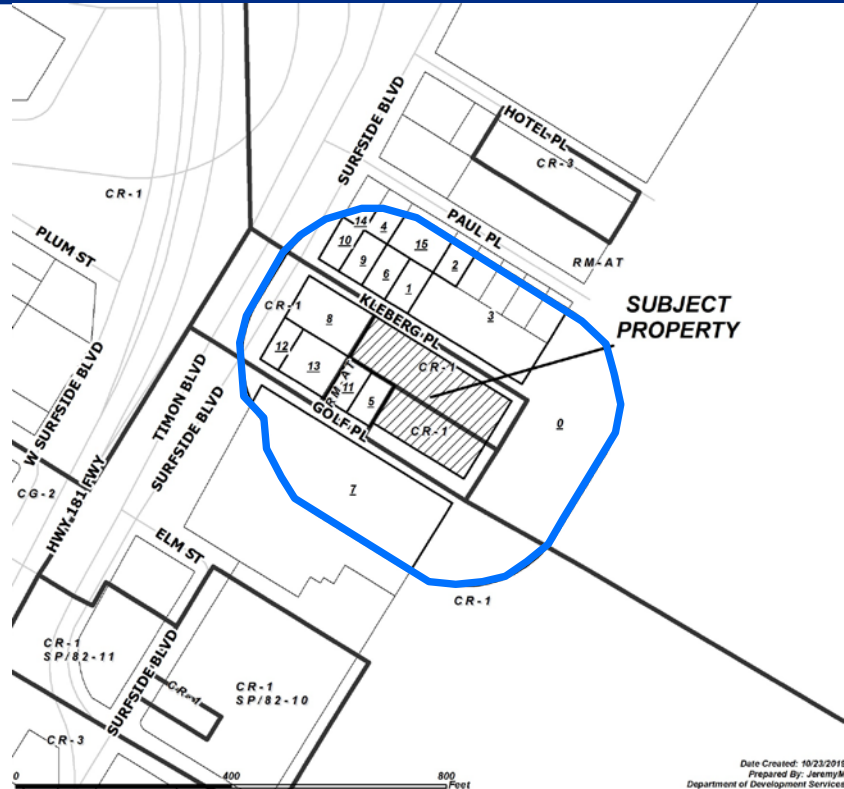
15 Notices mailed inside 200' buffer
5 Notices mailed outside 200' buffer

Notification Area

Opposed: 0 (0.00%)



In Favor: 0



Date Created: 10/23/2018
Prepared By: Jeremy
Department of Development Services

UDC Requirements



Buffer Yards:
CR-3 to RM-AT:
Type A: 10' & 10 pts.

Setbacks:
Street: 10 feet
Side/Rear: 0 feet





Parking:
1 per room

Landscaping, Screening, and
Lighting Standards

Uses Allowed: Multifamily,
Offices, Medical, Restaurants,
Retail, Bars, and Hotels.

Utilities



-  **Water:**
6-inch ACP
-  **Wastewater:**
8-inch VCP
-  **Gas:**
2-inch Service Line
-  **Storm Water:**
24-inch Line