

Southside Area Development Plan

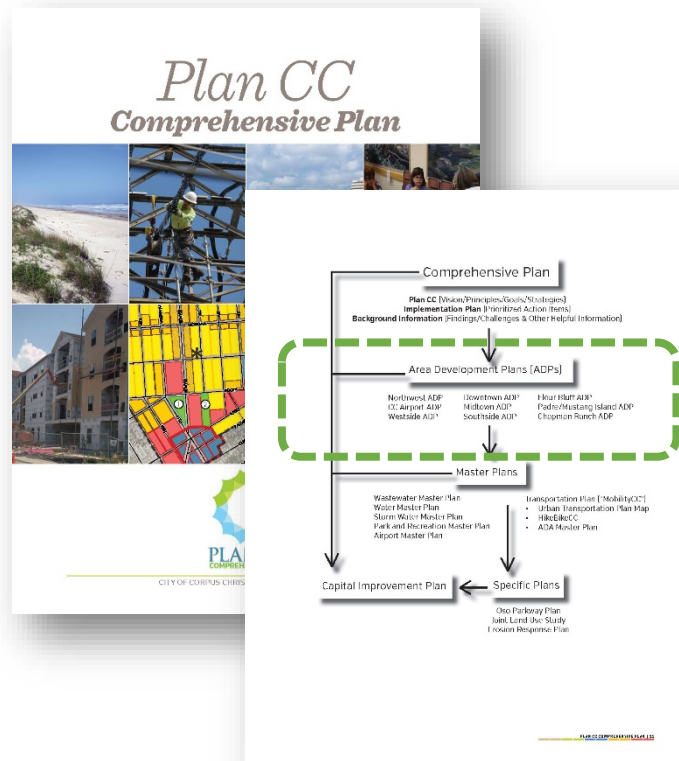


Planning Commission
February 5, 2020



Area Development Plans

- ❑ Area Development Plans (ADP) are an initiative of the Plan CC Comprehensive Plan
- ❑ An ADP goes into more detail about future development of each area
- ❑ ADPs have been in place for several years and are in the process of being updated







Timeline of Events and Activities





Engagement Process

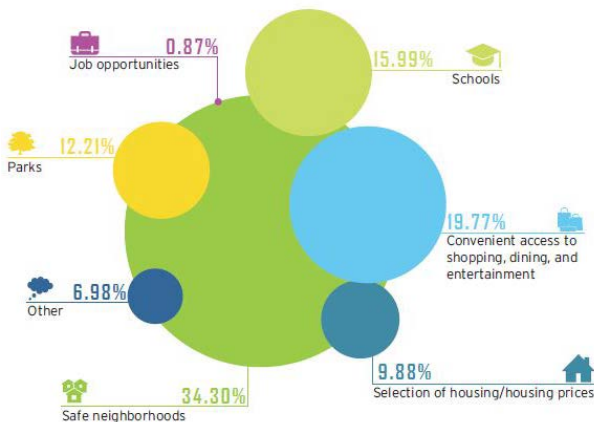




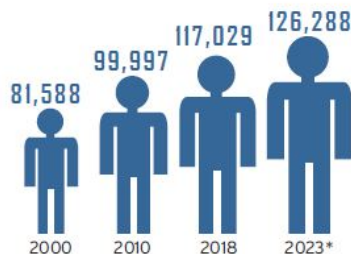
Introduction

- ❑ Demographics
- ❑ Online Survey Results
- ❑ Community Open House Input

WHAT IS YOUR FAVORITE THING ABOUT THE SOUTHSIDE AREA?

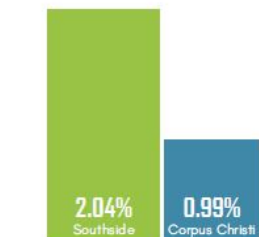


POPULATION¹



Population Growth by Year

*Projected Population



Average Annual Growth Rate 2000-2018

MY FAVORITE PART ABOUT SOUTHSIDE IS...



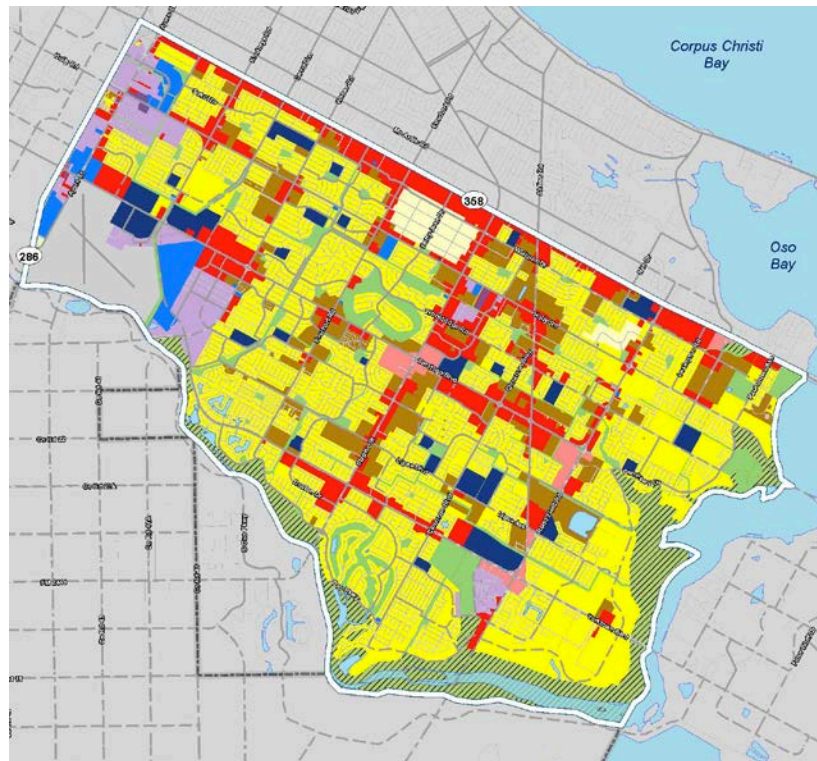
HOW CAN WE ENSURE OUR NEIGHBORHOODS THRIVE?





Future Land Use Map

LAND USE	ACRES	PERCENTAGE
Mixed-Use	210	1.3%
Agriculture/ Rural Enterprise	7	0.0%
Commercial	1,968	10.1%
Government	350	1.8%
Institutional	674	3.5%
Heavy Industrial	25	0.1%
Light Industrial	691	3.6%
Low-Density Residential	280	1.4%
Medium- Density Residential	6,997	36.0%
High-Density Residential	1,506	7.8%
Transportation	3,548	18.3%
Permanent Open Space	1,248	6.2%
Flood Plain Conservation	1,716	8.8%
Water	209	1.1%
Total	19,428	100.0%





Vision Themes

CELEBRATE OUR SAFE, FAMILY-ORIENTED NEIGHBORHOODS





Vision Themes

IMPROVE TRANSPORTATION CONDITIONS





Vision Themes

ENHANCE PARKS AND TRAILS





Vision Themes

PROMOTE THE OSO CREEK AND BAY AS A COMMUNITY AMENITY





Policy Initiatives

POLICY INITIATIVES	VISION THEMES			
	CELEBRATE OUR SAFE, FAMILY-ORIENTED NEIGHBORHOODS	ENHANCE PARKS AND TRAILS	IMPROVE TRANSPORTATION CONDITIONS	PROMOTE THE OSO CREEK AND BAY AS A COMMUNITY AMENITY
Create safe, attractive, and efficient transportation corridors.	✓	✓	✓	
Improve pedestrian, bicycle, and vehicular connectivity and safety.	✓	✓	✓	
Expand and improve infrastructure and city facilities as population and demand for services grow.		✓	✓	✓
Utilize the Oso Creek and Bay for sustainable recreation and ecotourism.	✓	✓		✓
Promote land development that enhances the character and opportunities in the Southside.	✓			
Focus park enhancement efforts on existing park facilities.		✓		
Reduce and improve stormwater runoff.				✓



Public Investment Initiatives

SHORT-TERM (1-5 YEARS)

REGIONAL TRANSPORTATION AUTHORITY	
R1	Del Mar Southside Campus Bus Stop
HEALTH AND SAFETY IMPROVEMENTS	
H1	Fire Station #17 - Add Ambulance
H2	J.C. Elliott Landfill Improvements
PARKS AND TRAILS	
P1	Bill Witt Park Master Plan (underway)
P2	Bill Witt Park Improvements (underway)
P3	St. Andrews Neighborhood Park Improvements
P4	Paul Jones Sports Facilities - Drainage Improvements (underway)
P5	Oso Bay Wetlands Preserve Phase III - Administrative Offices Building
P6	Crossgate Trail
P7	Schanen Hike & Bike Trail Phase III (underway)
P8	Oso Creek Trail - Planning*
STREET IMPROVEMENTS	
S1	SH 358 Ramp Construction (TXDOT)
S2	SPID Ramp Reversal (TXDOT)
S3	Pedestrian Connectivity - Extend Sidewalk
S4	Yorktown Boulevard Street Improvements
S5	Rodd Field Road Expansion (underway)
S6	Everhart Road Street Improvements (underway)
S7	Slough Road Street Improvements (underway)
S8	Holly Road Street Improvements (underway)
S9	Lips Boulevard Street Improvements (underway)
S10	Woodridge Drive Street Improvements
S11	Rodd Field Road Extension
S12	Holly Road Street Improvements
S13	Safety Steel Drive Extension
S14	Pavo Real Street Connection
S15	Traffic Signal Coordination & Intersection Improvements*
UTILITY/INFRASTRUCTURE	
U1	Storm Water Master Plan*
U2	Yorktown Boulevard Water Line Extension
U3	Williams Lift Station Force Main (Line A)
U4	Oso WWTP Improvements
U5	Greenwood WWTP Improvements

* Projects Not Mapoed





Public Investment Initiatives

MID-TERM (5-10 YEARS)

HEALTH AND SAFETY IMPROVEMENTS	
H3	Community Policing Multi-Purpose Facilities - Full Substation* (Location to be Determined)
PARKS AND TRAILS	
P9	Schanen Hike and Bike Trail Phase IV
P10	Drainage Channel Trail Development Program Phase I**
P11	Oso Creek Trail - Phase I**
STREET IMPROVEMENTS	
S16	Wooldridge Drive Street Improvements
S17	Williams Drive Street Construction and Drainage Improvements
S18	Lipes Boulevard Street Improvements
S19	Rodd Field Road Extension
S20	Oso Parkway
S21	Traffic Signal Coordination & Intersection Improvements*
S22	Ayers Street Sidewalk
UTILITY/INFRASTRUCTURE	
U6	Williams Drive Channel Improvements

* Projects Not Mapped

** Oso Creek Trail and Drainage Channel Trail projects are intended to show general location and do not represent final alignment.





Public Investment Initiatives

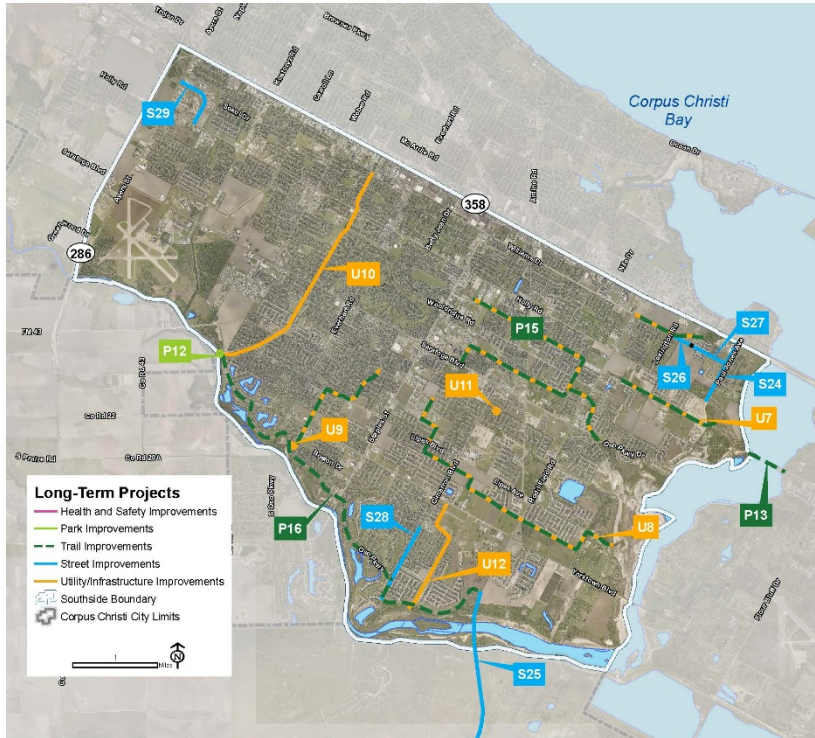


LONG-TERM (10+ YEARS)

PARK AND TRAIL IMPROVEMENTS	
P12	Oso Creek Kayak Launch
P13	Oso Bay Railroad Trestle - Hike and Bike Trail
P14	Regional Recreation Center - 25,000 sq. ft.* (including Library and Technology Facilities in Recreation Center)
P15	Drainage Channel Trail Development Program Phase II**
P16	Oso Creek Trail Phase II**
STREET IMPROVEMENTS	
S23	Oso Parkway Bridges*
S24	Paul Jones Avenue Street Improvements
S25	Rodd Field Bridge and Extension
S26	Williams Drive Street Construction and Drainage Improvements (Lexington Rd. to Ennis Joslin Rd.)
S27	Williams Drive Street Construction and Drainage Improvements (Ennis Joslin Rd. to Paul Jones Ave.)
S28	Cimarron Boulevard Street Improvements
S29	Civitan Drive Street Improvements
UTILITY/INFRASTRUCTURE IMPROVEMENTS	
U7	Drainage Channel Excavation - Master Channel 29
U8	Drainage Channel Excavation - Master Channel 31
U9	Reflections Park Drainage Improvements
U10	Schanen Ditch Improvements
U11	Brighton Village Drainage Improvements
U12	Cimarron Drainage Concrete Pilot Channel

* Projects Not Mapped

** Oso Creek Trail and Drainage Channel Trail projects are intended to show general location and do not represent final alignment.





MetroQuest Survey Summary

SCREEN 2 | VISION THEMES

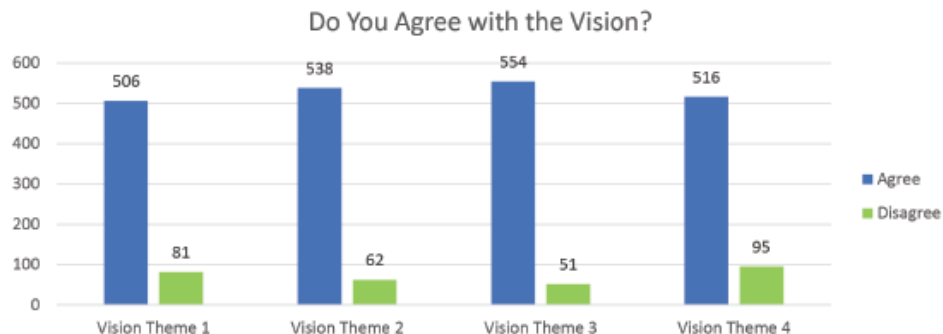
Based on the public input, four vision themes have been created for Southside. Renderings accompany each vision theme to illustrate the vision. Identify if you agree with the following vision themes.

Vision Theme 1: Celebrate Our Safe, Family-Oriented Neighborhoods

Vision Theme 2: Improve Transportation Conditions

Vision Theme 3: Enhance Parks and Trails

Vision Theme 4: Promote the Oso Creek and Bay as a Community Amenity





Recommendation

Staff Recommends
Adoption



www.cctexas.com/southsideandlondon