

London

Area Development Plan

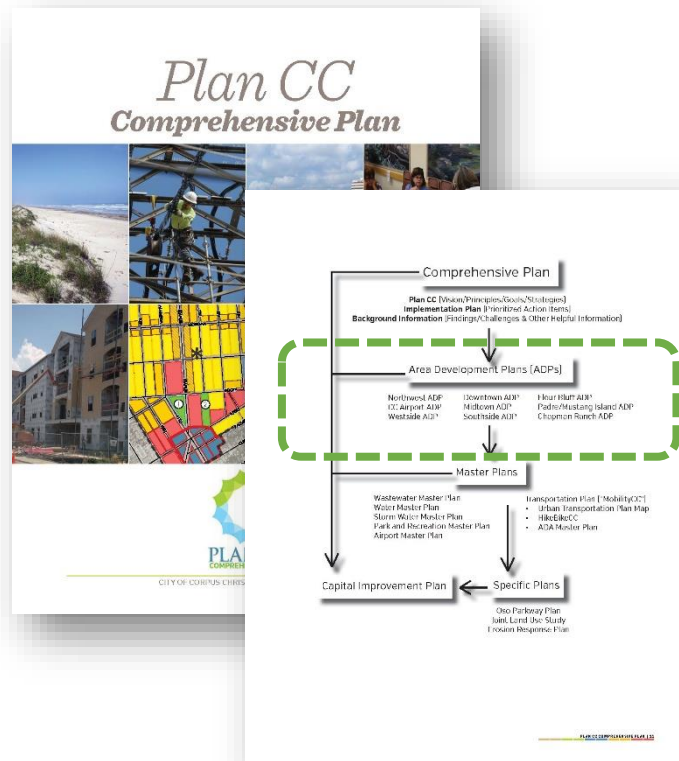


City Council Presentation
February 25, 2020



Area Development Plans

- ❑ Area Development Plans (ADP) are an initiative of the Plan CC Comprehensive Plan
- ❑ An ADP goes into more detail about future development of each area
- ❑ ADPs have been in place for several years and are in the process of being updated





Timeline of Events and Activities





Engagement Process

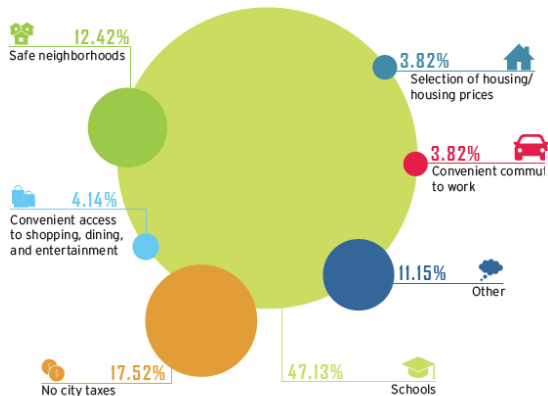




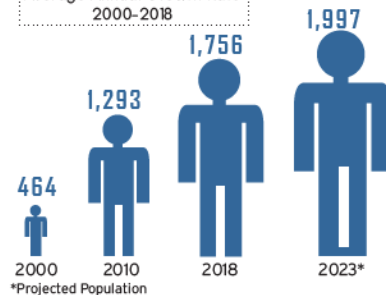
Introduction

- ❑ Demographics
- ❑ Online Survey Results
- ❑ Community Open House Input

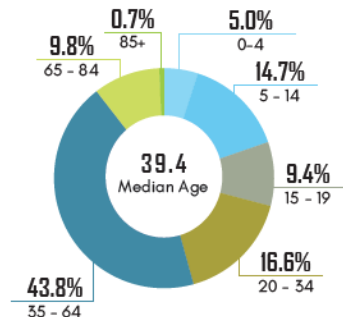
WHAT IS YOUR FAVORITE THING ABOUT THE LONDON AREA?



POPULATION¹



AGE (2018)¹



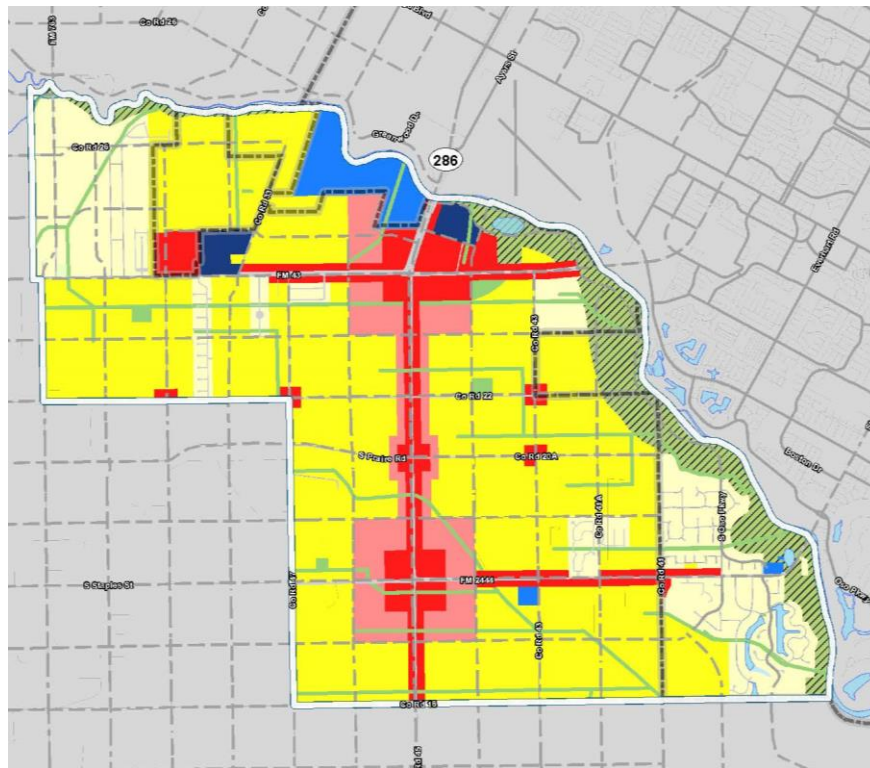
WHAT IS MISSING MOST IN LONDON?





Future Land Use Map

LAND USE	ACRES	PERCENTAGE
Mixed-Use	776	6.2%
Agriculture/ Rural Enterprise	5	0.0%
Commercial	1,015	8.1%
Government	323	2.6%
Institutional	135	1.1%
Low-Density Residential	1,783	14.2%
Medium-Density Residential	6,317	50.3%
Transportation	535	4.3%
Permanent Open Space	650	5.2%
Flood Plain Conservation	984	7.8%
Water	48	0.4%
Total	12,571	100.0%





Vision Themes

CELEBRATE OUR COMMUNITY CHARACTER





Vision Themes

PROMOTE SUSTAINABLE GROWTH





Vision Themes

PROMOTE THE OSO CREEK AND BAY AS A COMMUNITY AMENITY





Policy Initiatives

POLICY INITIATIVES	VISION THEMES		
	CELEBRATE OUR COMMUNITY CHARACTER	PROMOTE SUSTAINABLE GROWTH	PROMOTE THE OSO CREEK AND BAY AS A COMMUNITY AMENITY
Expand and improve infrastructure and city facilities.		✓	✓
Promote land development that enhances the character and opportunities in London.	✓	✓	✓
Provide outdoor recreation amenities.	✓	✓	✓
Utilize the Oso Creek and Bay for sustainable recreation and ecotourism.	✓	✓	✓
Reduce and improve stormwater runoff.		✓	✓

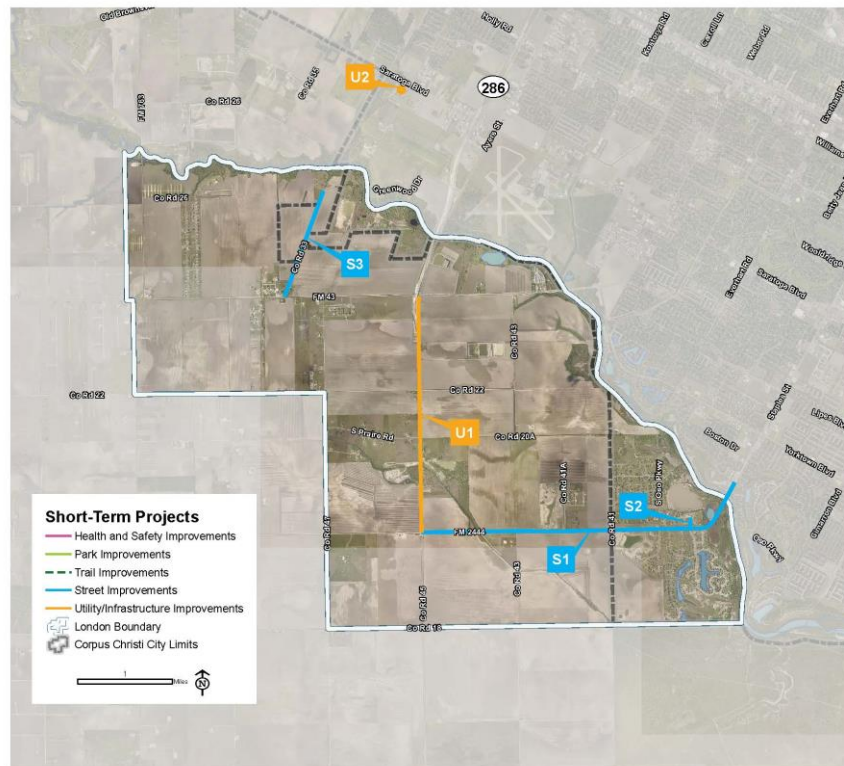


Public Investment Initiatives

SHORT-TERM (1-5 YEARS)

PARKS AND TRAILS	
P1	Greenbelt/Storm Water Master Plan*
STREET IMPROVEMENTS	
S1	FM 2444 - Construct 5 Lane Curb and Gutter Roadway (TxDOT)
S2	South Oso Parkway Street Improvements
S3	County Road 33 Street Improvements
UTILITY/INFRASTRUCTURE	
U1	SH 286 Water Line Replacement
U2	Greenwood Wastewater Treatment Plant Improvements

* Projects Not Mapped





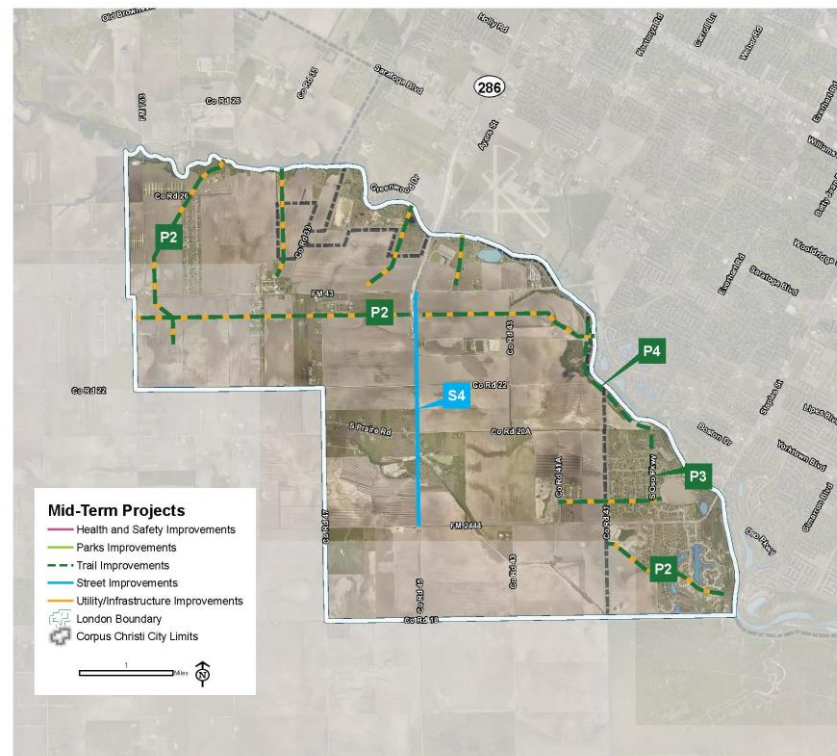
Public Investment Initiatives

MID-TERM (5-10 YEARS)

HEALTH AND SAFETY	
H1	Fire Station #19 - Building and Ambulance* (Vicinity of SH 286 and FM 43)
PARKS AND TRAILS	
P2	Drainage Channel Trail Development Phase I**
P3	Oso Creek Trail Phase I**
P4	Oso Creek Trail Phase II**
STREET IMPROVEMENTS	
S4	Crosstown Extension to FM 2444 (TxDOT)

* Projects Not Mapped

** Oso Creek Trail and Drainage Channel Trail projects are intended to show general location and do not represent final alignment.





Public Investment Initiatives

LONG-TERM (10+ YEARS)

HEALTH AND SAFETY	
H2	Fire Station #19 - New Fire Truck and Ladder Truck* (Vicinity of SH 286 and FM 43)
H3	Fire Station #20 - New Fire Station* (Vicinity of SH 286 and FM 2444)
PARKS AND TRAILS	
P5	Oso Creek Trail Phase III**
P6	Drainage Channel Trail Development Phase II**
STREET IMPROVEMENTS	
S5	FM 43 Street Improvements (TxDOT)

* Projects Not Mapped

** Oso Creek Trail and Drainage Channel Trail projects are intended to show general location and do not represent final alignment.





MetroQuest Survey Summary

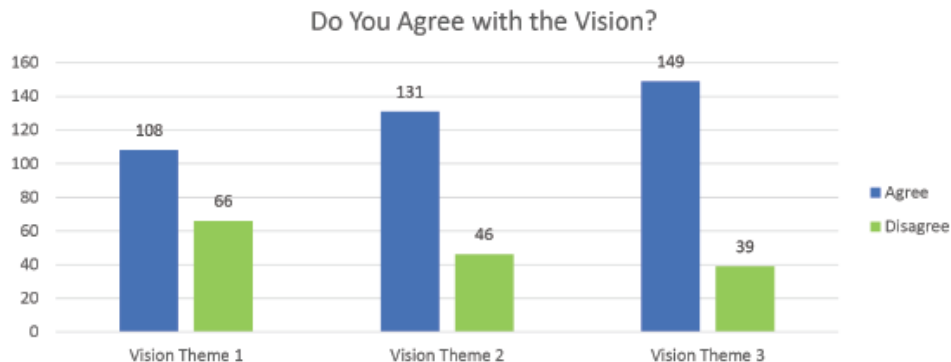
SCREEN 2 | VISION THEMES

Based on the public input, three vision themes have been created for the London area. Renderings accompany each vision theme to illustrate the vision. Identify if you agree with the following vision themes.

Vision Theme 1: Celebrate Our Community Character

Vision Theme 2: Promote Sustainable Growth

Vision Theme 3: Promote the Oso Creek and Bay as a Community Amenity





Recommendation

Staff and
Planning
Commission
Recommend
Adoption



www.cctexas.com/southsideandlondon