



# **Partial Easement Closure for Wooldridge Creek Unit 14**

**City Council Presentation  
May 12, 2020**

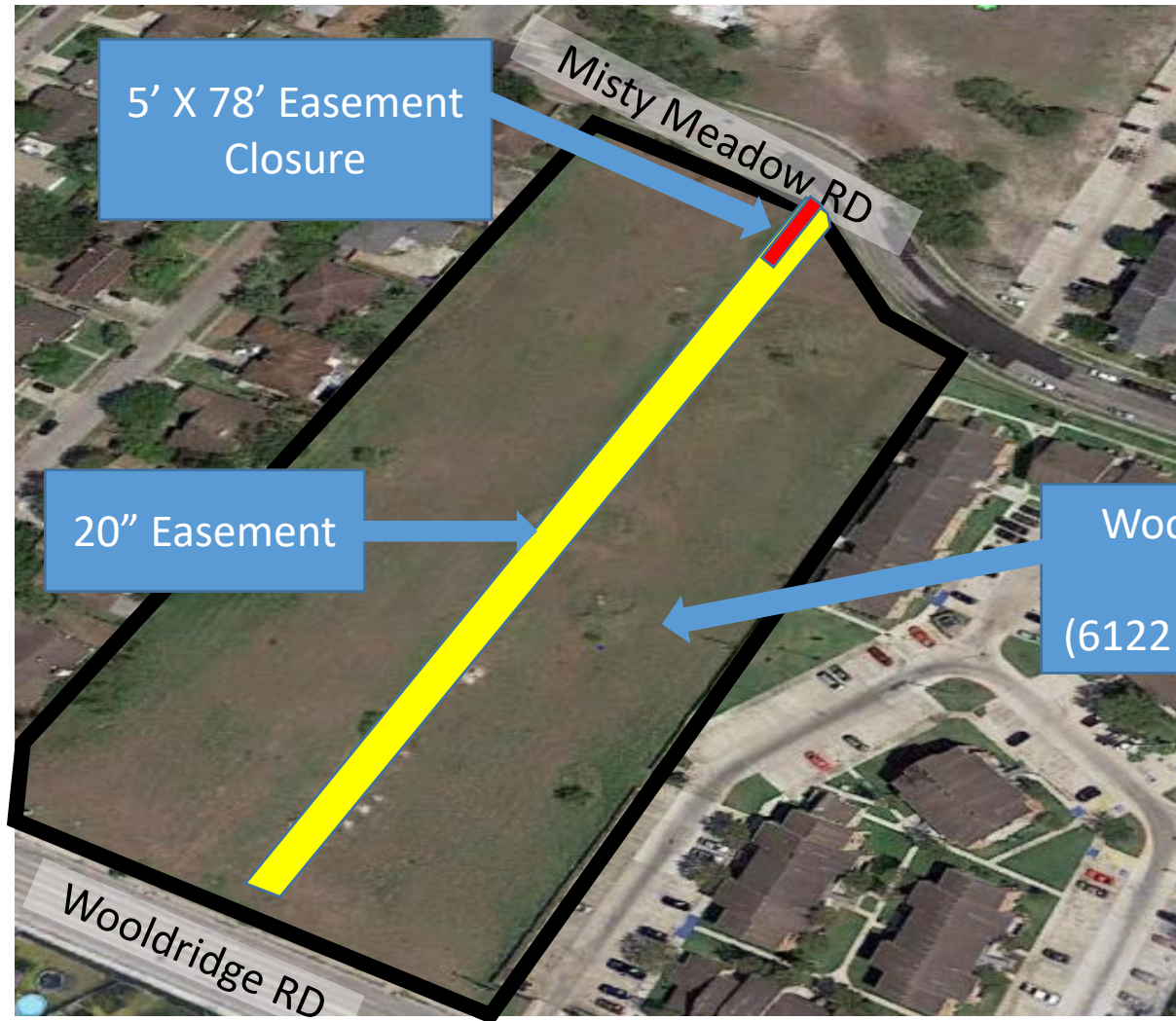


# Vicinity Map





# Aerial Overview



Wooldridge Creek  
Unit 14  
(6122 Wooldridge Rd)



# Staff Recommendation

---

## Approval

The applicant requesting the utility easement closure has paid the required \$530.00 application fee and the easement closure request has been processed in accordance with Section 49-13 of the City Code of Ordinances.

---