

# **Peterson Properties Agreement**

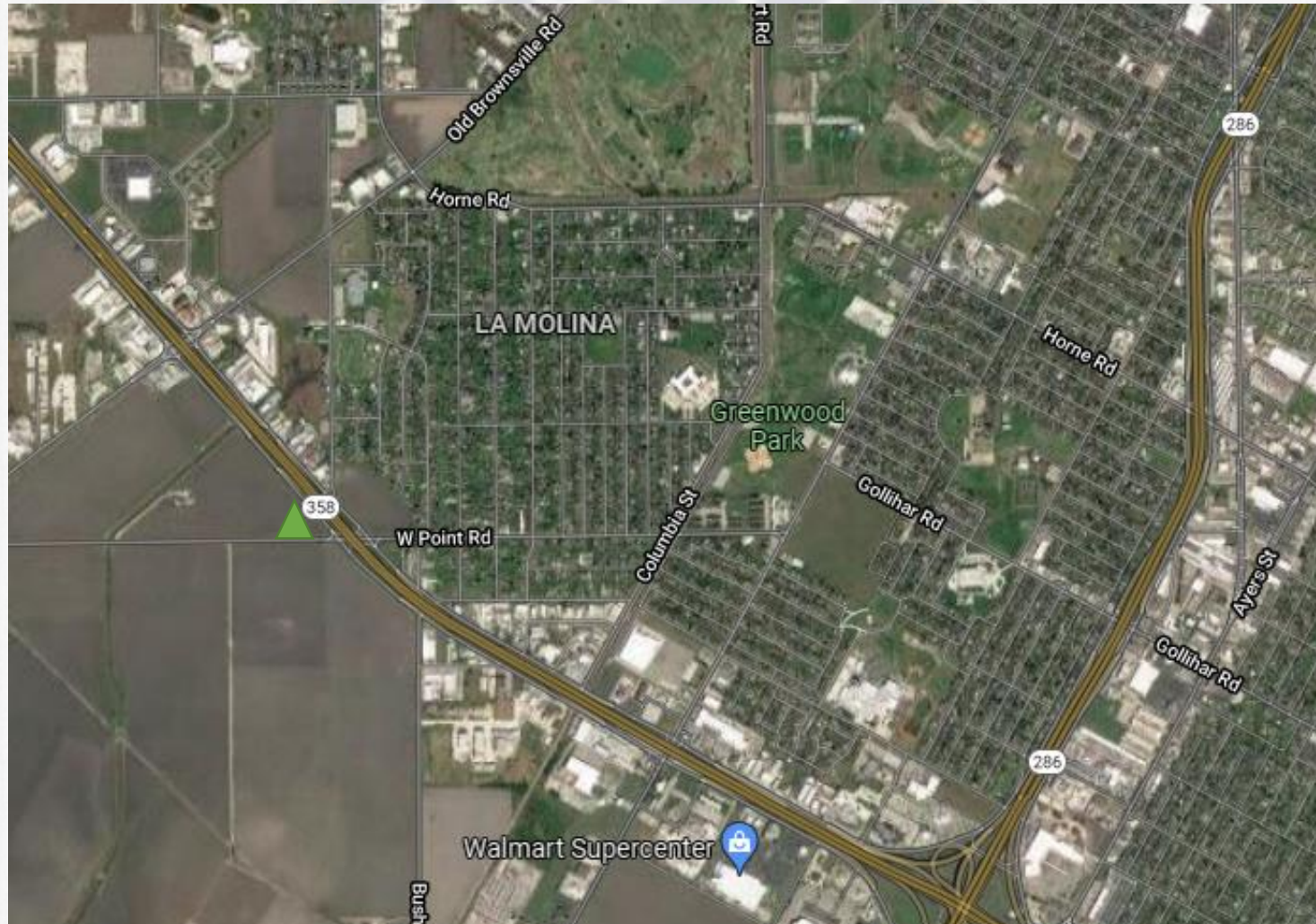
---

## **Second Amendment to Wastewater Lift Station Construction and Reimbursement Agreement with Peterson Properties, Ltd.**

September 21, 2021

---

# Aerial Overview

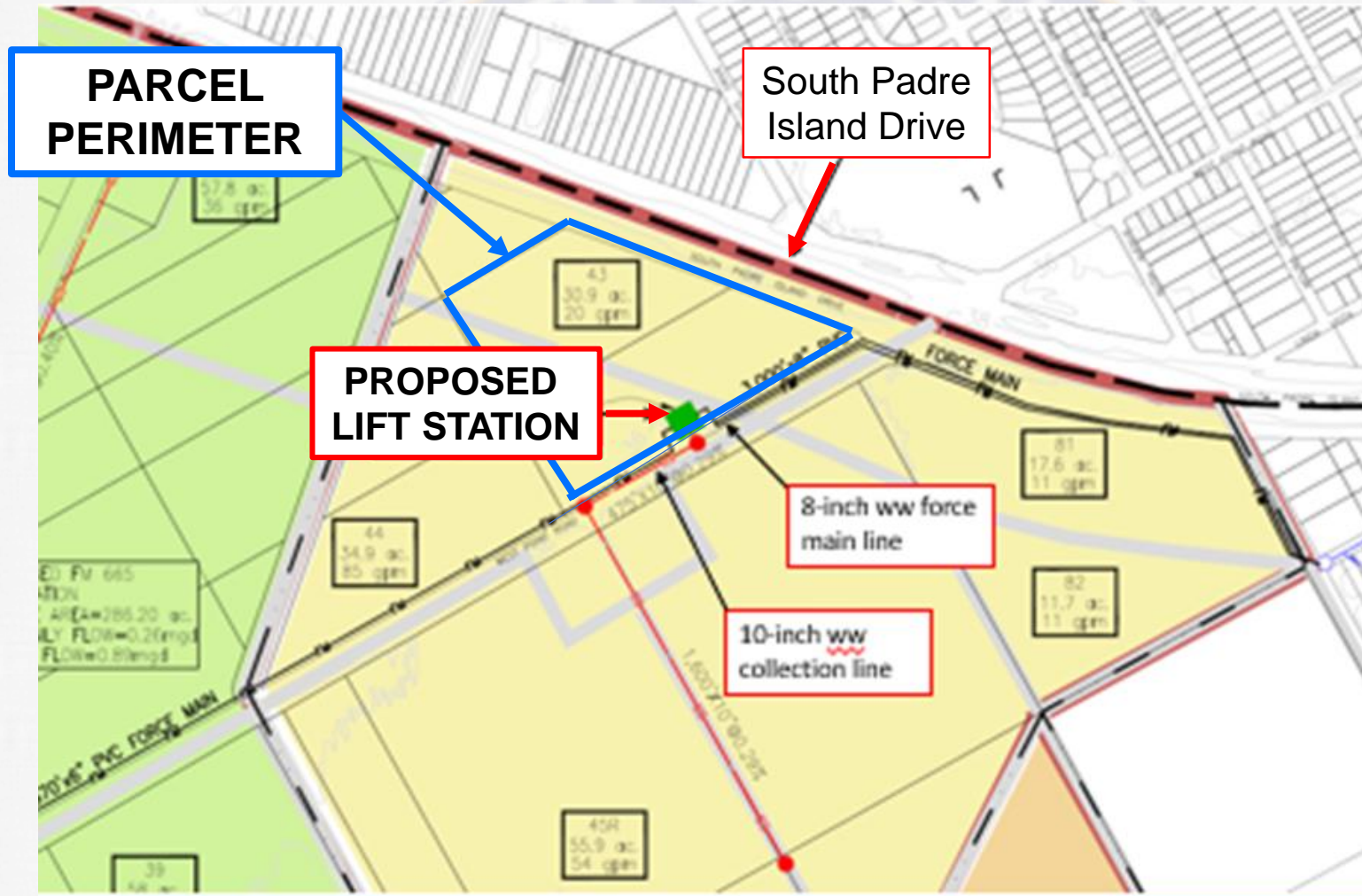




# Parcel Vicinity Map



# Lift Station Location





# Trust Fund Balance as of July 31, 2021

---

Water Arterial Transmission & Grid Main Trust	Water Distribution Main Trust	Sanitary Sewer Trunk System Trust	Sanitary Sewer Collection Line Trust
lot & acreage fees	pro-rata fees	lot & acreage fees	pro-rata fees
75% surcharge	25% surcharge	75% surcharge	25% surcharge
<b>\$102,273.83</b>	<b>\$22,225.16</b>	<b>\$116,572.31</b>	<b>\$28,235.67</b>

**Wastewater Trunk System Trust Fund's Balance is \$116,572.31.**

---

# Recommendation

---

## Approval

The request is in accordance with UDC Section 8.5.2.E.4 Wastewater Trunk  
System Trust Fund

## LIFT STATION LOCATION





# Plat

