



# Corpus Christi Transportation Master Plan (MobilityCC) Amendments



**Modifications Related to Future Mirabella & King's Lake West Developments**



City Council Presentation  
June 17, 2025



# Background

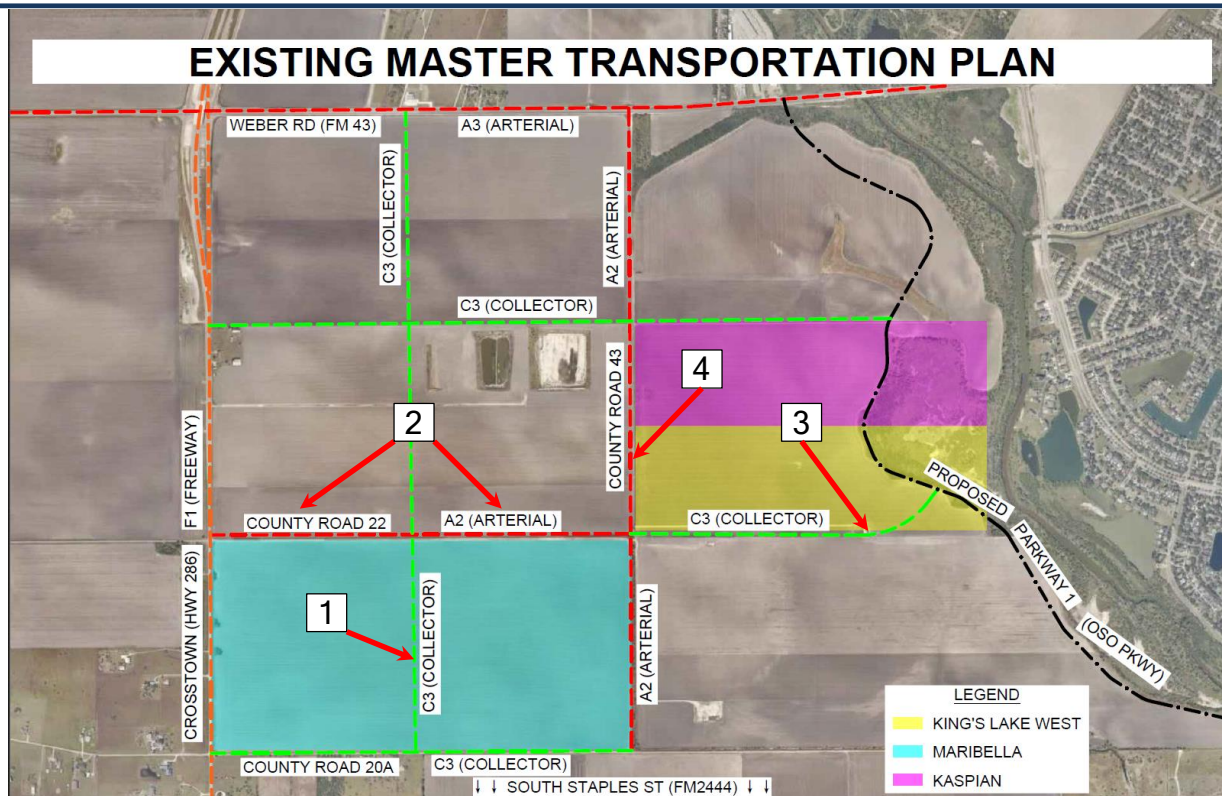
- Transportation Plan Requested Amendments**

ID #	Road	Classification	Limits	Proposed Modification	Requestor	Planning Commission /Staff Recommendation
1	Planned C3 Collector	C3 Primary Collector	County Road 22 to County Road 20A	C1 Collector	Mirabella	Yes
2	County Road 22	C3 Primary Collector	SH286 to County Road 43	C1 Collector	King's Lake	Yes
3	County Road 22	A2 Secondary Arterial	County Road 43 to P1 Parkway	C1 Collector	City	Yes
4	County Road 43	A2 Secondary Arterial	Adjacent to King's Lake	C1 Collector	King's Lake	No

- Requested Amendments Presented to Planning Commission**
- TIA Provided for Each Development (Within in 1-Mile)**

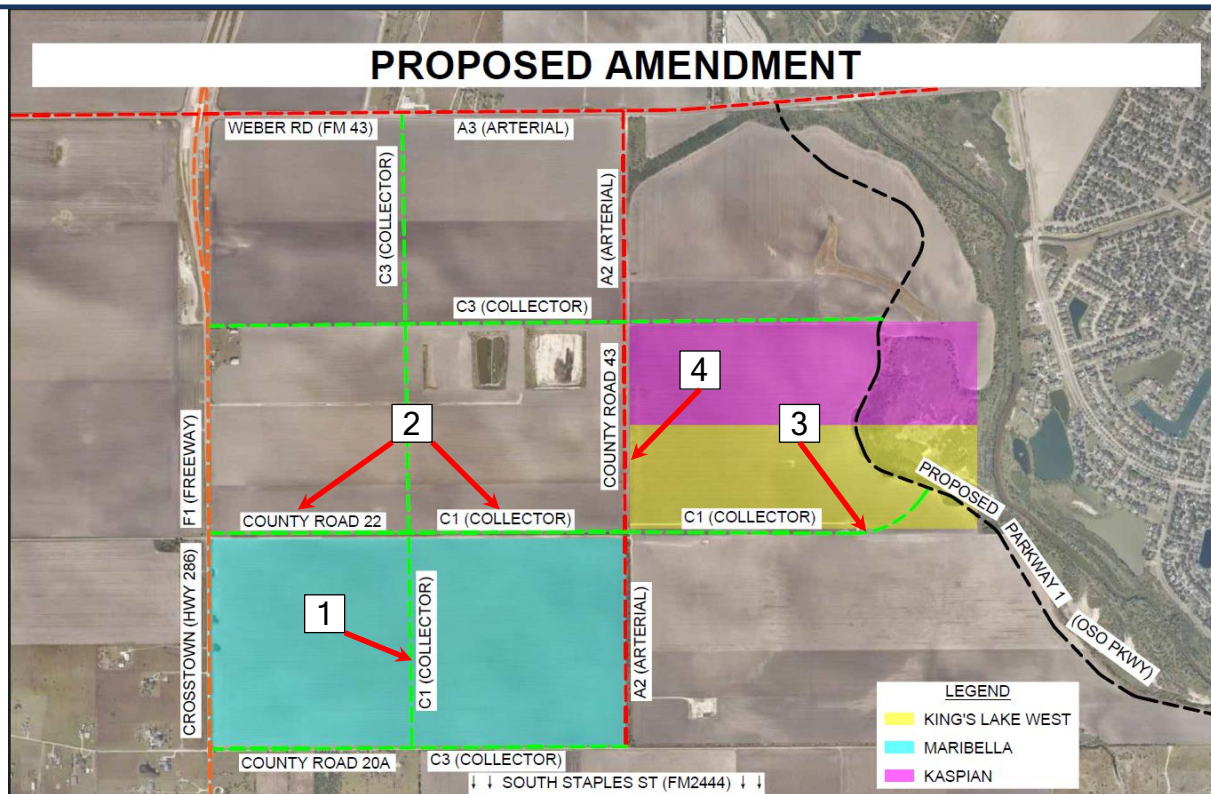


# Amendment Requests





# Recommendations





# Recommendations

## Amend & Update Transportation Plan as Indicated Below

ID #	Road	Classification	Limits	Proposed Modification	Requestor	Planning Commission /Staff Recommendation
1	Planned C3 Collector	C3 Primary Collector	County Road 22 to County Road 20A	C1 Collector	Mirabella	Yes
2	County Road 22	C3 Primary Collector	SH286 to County Road 43	C1 Collector	King's Lake	Yes
3	County Road 22	A2 Secondary Arterial	County Road 43 to P1 Parkway	C1 Collector	City	Yes
4	County Road 43	A2 Secondary Arterial	Adjacent to King's Lake	C1 Collector	King's Lake	No

1. Reduce Planned C3 Primary Collector to C1 Collector.
2. Reduce County Road 22, from SH286 to County Road 43 to a C1 Collector.
3. Reduce County Road 22, from County Road 43 to a Proposed P1 Parkway, to a C1 Collector